



**Mekong River Commission**

# **Weekly Wet Season Situation Report in the Lower Mekong River Basin 23 – 29 September 2025**

Prepared by  
The Regional Flood and Drought Management Centre  
30 September 2025

*The MRC is funded by contributions from its Member Countries and Development Partners, including Australia, Belgium, the European Union, Finland, France, Germany, Japan, Luxembourg, the Netherlands, Sweden, Switzerland, the United States and the World Bank.*

**Copyright © Mekong River Commission, 2025**

First published (2020)

Some rights reserved.

This work is the product of the Mekong River Commission Secretariat. While all efforts are made to present accurate information, the Secretariat does not guarantee the accuracy of the data included in this work. The boundaries, colours, denomination, and other information shown on any map in this work do not imply any judgement on the part of the MRC concerning the legal status of any territory or the endorsement or acceptance of such boundaries.

Nothing herein shall constitute or be considered to be a limitation upon or waiver of the privileges and immunities of the MRC, all of which are specifically reserved.

This publication may be reproduced in whole or in part and in any form for educational or non-profit purposes without special permission from the copyright holder, provided acknowledgement of the source is made and notification is sent to the MRC. The MRC would appreciate receiving a copy of any publication that uses this publication as a source. This publication cannot be used for sale or for any other commercial purpose whatsoever without permission in writing from the MRC.

**Title:** Weekly wet season situation report in the Lower Mekong River Basin for 23 – 29 September 2025.

ISSN: 1728-3248

**Keywords:** Monitoring/forecasting/weather/the Mekong/the Tonle Sap Lake

For bibliographic purposes, this volume may be cited as:

Mekong River Commission. (2024). *Weekly wet season situation report in the Lower Mekong River Basin for 23 – 29 September 2025*. Vientiane: MRC Secretariat.

Information on MRC publications and digital products can be found at  
<http://www.mrcmekong.org/publications/>

**All queries on rights and licenses should be addressed to:**

Mekong River Commission

Documentation and Learning Centre

184 Fa Ngoum Road, Unit 18, Ban Sithane Neua, Sikhottabong District, Vientiane 01000, Lao PDR

Telephone: +856-21 263 263 | E-mail: [mrcs@mrcmekong.org](mailto:mrcs@mrcmekong.org) | [www.mrcmekong.org](http://www.mrcmekong.org)

# Content

Content .....	i
List of Figures.....	ii
List of Tables.....	iii
Key Messages .....	iv
1 Introduction .....	1
2 General Weather Patterns .....	2
3. Rainfall and Water Level Monitoring .....	3
3.1. Rainfall monitoring .....	4
3.2. Water level monitoring .....	6
4. Flash Flood in the Lower Mekong Basin .....	10
5. Drought Monitoring in the Lower Mekong Basin .....	13
5.2. Weekly drought monitoring from 23 - 29 September 2025 .....	13
6 Weather and Water Level Forecast and Flash Flood information .....	15
6.1 Rainfall forecast .....	15
6.2 Water level forecast .....	17
6.3 Flash Flood Information .....	20
6.4 Drought forecast .....	20
7 Summary and Possible Implications .....	21
7.1. Rainfall and its forecast .....	21
7.2. Water level and its forecast .....	21
7.3. Flash flood and its trends .....	21
7.4. Drought condition and its forecast .....	21
Annex A: Weekly water level monitoring at 22 key stations .....	22
Annex B: Tables for weekly updated water levels and rainfall at the Key Stations .....	25
Annex C: Performance of the weekly flood forecasting .....	29

## List of Figures

Figure 1: Weather conditions over the LMB.....	2
Figure 2: Outlook of wet and dry conditions over the Asian countries by ASMC.....	3
Figure 3: Tropical storm observed on 29 September 2025 .....	3
Figure 4: Weekly rainfall distribution over the LMB during 23 – 29 September 2025 .....	5
Figure 5: The key stations along LMB for river flood forecasting .....	7
Figure 6. Water level at the Jinghong hydrological station up to 29 September 2025. ....	8
Figure 7: Total accumulated reverse flow to Tonle Sap Lake updated on 29 September. ....	9
Figure 8: Seasonal change of inflows and outflows of Tonle Sap Lake. ....	9
Figure 9. The seasonal change in monthly flow volume of Tonle Sap Lake. ....	10
Figure 10. Flash Flood Guidance for the next 1-hr, 3-hr and 6-hr on 29 September .....	13
Figure 11: Weekly standardized precipitation index from 23 - 29 September .....	13
Figure 12: Weekly Index of Soil Water Fraction from 23 - 29 September.....	14
Figure 13: Weekly Combined Drought Index from 23 - 29 September .....	15
Figure 14: Accumulated rainfall forecast from CHIRPS-GFS (30 September – 04 October 2025).....	16
Figure 15: Seasonal forecast of rainfall anomalies for October 2025 to January 2026 based on CFSv2 (NCEP-NOAA) .....	20
Figure 16. Monthly forecasts of combined drought indicators from September to November 2025 .....	20

## List of Tables

Table 1. The monthly change in the flow volume of Tonle Sap Lake. ....	10
Table 2. Detected flash flood in the LMB on 29 September .....	11
Table 3. River Monitoring and Forecasting Bulletin.....	18

# Key Messages

**Key messages for this weekly report are presented below.**

## **Rainfall monitoring and forecast**

- Due to the impact of the typhoon BUALOI, heavy to very heavy rain occurred in the northern and central part of Lao PDR on 29 September.
- Next week, from 30 September – 06 October, moderate to heavy rain is expected to occur in the northern and central part of Lao PDR, the northern and northeastern part of Thailand, the central of Cambodia, and Mekong delta.

## **Water level monitoring and forecast**

- At 22 key monitoring stations along the Mekong mainstream from 23 – 29 September 2025, water levels at all stations along the Mekong mainstream have been in normal conditions, which have not reached alarm or flood levels, and the flow threshold (PMFM 6C) are under normal conditions. It is also the same condition for Tan Chau and Chau Doc monitoring stations, which are significantly influenced by sea tidal fluctuation.
- In the period of 30 September – 04 October 2025, Water levels at all stations along the Mekong mainstream are expected to rise. Water levels at Khong Chiam, Pakse, Stung Treng and Kratie stations are expected to reach alarm level within the next 5 days. At Tan Chau and Chau Doc stations, the water levels are predicted to be also fluctuated, resulting from the influence of sea tidal patterns.

## **Drought condition and forecast**

- During 23 - 29 September, the LMB were facing normal to wet conditions.
- In September and November 2025, the total amount of rainfall in most areas of the LMB will be higher than the LTA by around 5 - 25 mm, except for some areas in the Mekong Delta. However, in October, the total amount of rainfall in most areas of the LMB will be lower than the LTA by around 5 - 15 mm, except for some areas in the southern Lao PDR, northern Cambodia, and the 3S Basin.
- The forecast indicates that no drought conditions are expected in over the LMB in September and October. In November, some areas in the northern part of Lao PDR and northeastern part of Thailand are likely to occur moderate drought using the Combined Drought Indicator (CDI).

# 1 Introduction

This Weekly Wet Season Situation Report presents a preliminary analysis of the weekly hydrological situation in the Lower Mekong River Basin (LMB) for **23 – 29 September 2025**. The trend and outlook for water levels are also presented.

This analysis is based on the daily hydro-meteorological data provided by the Mekong River Commission (MRC) Member Countries – Cambodia, Lao PDR, Thailand, and Viet Nam – and on satellite data. The water level indicated in this report refers to an above zero gauge of each station.

The report covers the following topics that are updated weekly:

- General weather patterns, including rainfall patterns over the LMB.
- Water levels in the LMB, including in the Tonle Sap Lake.
- Flash flood and drought situation in the LMB.
- Weather, water level and flash flood forecast, and
- Possible implications.

Mekong River water levels are updated daily and can be accessed from:

<http://ffw.mrcmekong.org/bulletin.php>.

Drought monitoring and forecasting information is available at:

<http://droughtforecast.mrcmekong.org>

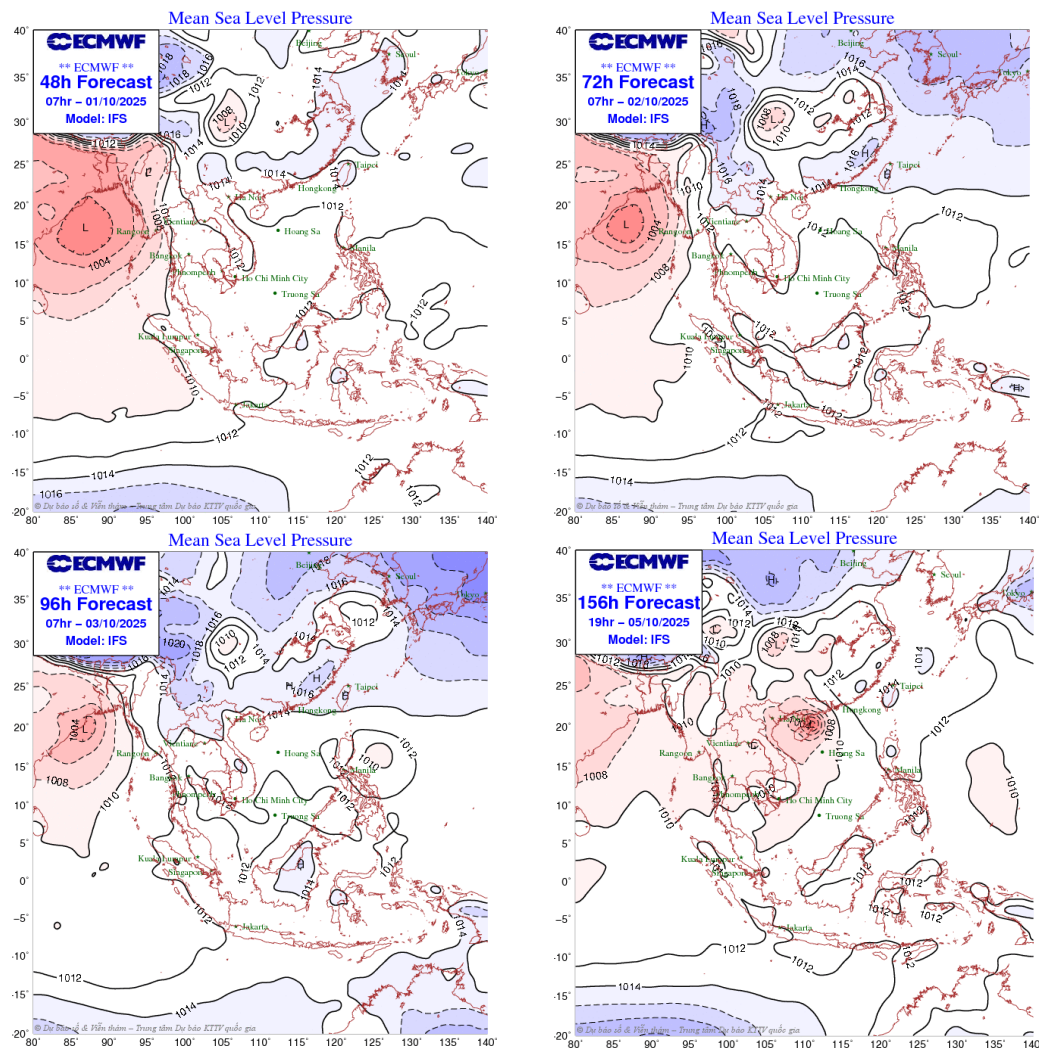
Flash flood information is accessible at: <http://ffp.mrcmekong.org:8000/bulletin/>



## 2 General Weather Patterns

Next week, the high pressure area may impact over the upper part of the LMB from 01 – 04 October, then lower pressure area may impact over the LMB from 05 – 06 October, moderate to heavy rain is expected to occur in the northern and central part of Lao PDR, the northern and northeastern part of Thailand, the central of Cambodia, and Mekong delta during 01 – 02 October.

**Figure 1** presents mean sea level pressure over the region



**Figure 1: Weather conditions over the LMB**

According to the ASEAN Specialised Meteorological Centre (ASMC, <http://asmc.asean.org/home/>), the sub seasonal weather outlook (15 – 28 September 2025) indicates that the Lower Mekong Basin (LMB) are expected to experience drier condition from central to upper parts. Moreover, it will not be expected to either warmer or cooler conditions as well. **Figure 2** shows the outlook of weather condition from 15 to 28 September 2025 in Southeast Asia based on results from the NCEP model (National Centres for Environmental Prediction).

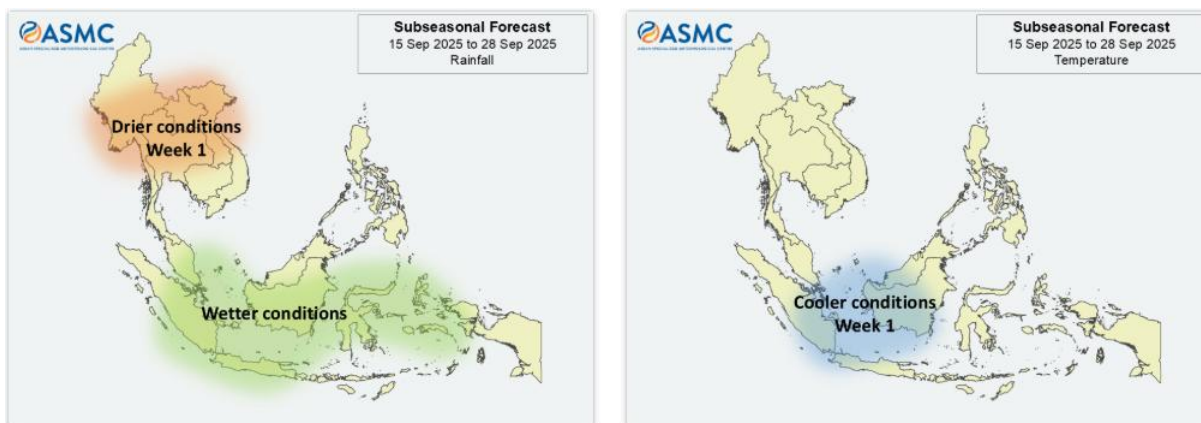


Figure 2: Outlook of wet and dry conditions over the Asian countries by ASMC.

Based on the tropical storm ([https://www.jma.go.jp/bosai/weather\\_map/#lang=en](https://www.jma.go.jp/bosai/weather_map/#lang=en)), there is one typhoon (ST), namely BUALOI at NW pacific system from 24 - 29 September 2025. At 07:00 on 29 September, the centre of the STS was at about 18.8°N – 105.15°E on the mainland border of Nghe An (Viet Nam) and Central Lao PDR. The TS moved the West Northwest about 20 - 25 km/h and gradually weakening into a Tropical Depression, then a Low-Pressure Area in the upper part of Lao PDR.

(Figure 3).

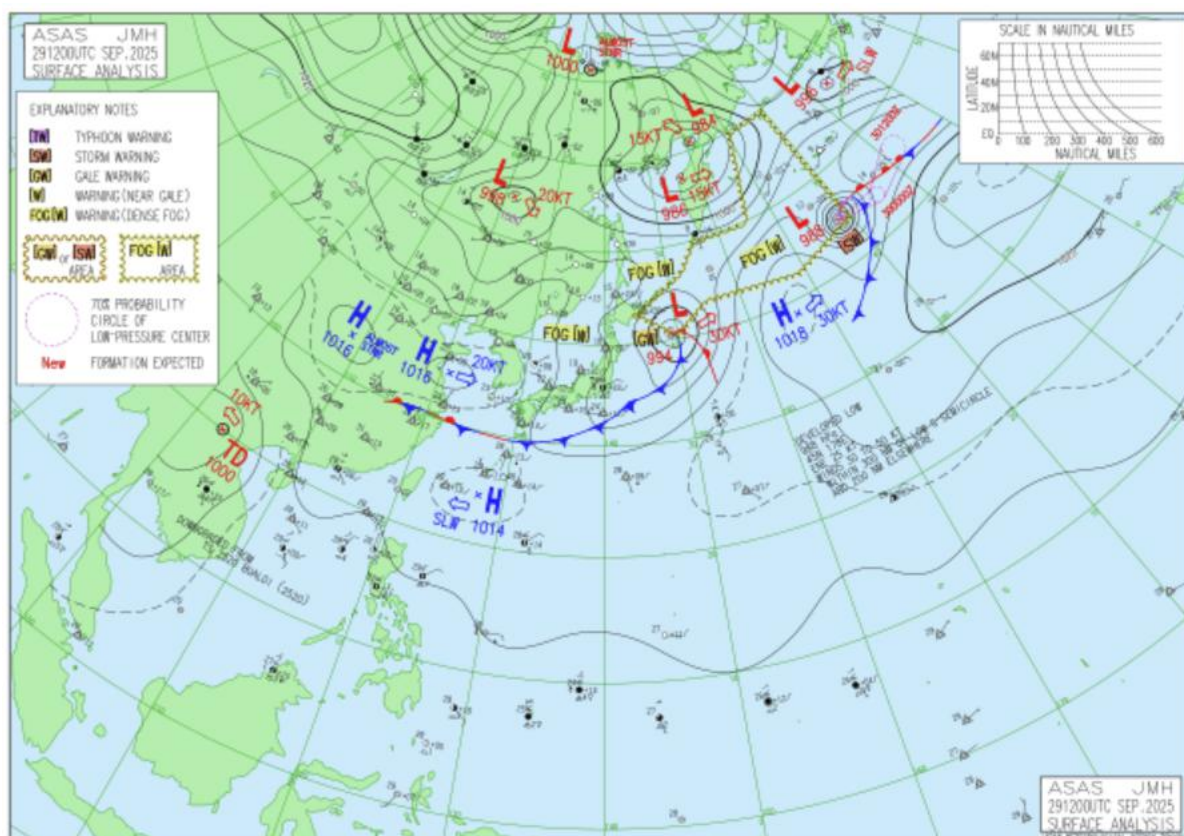


Figure 3: Tropical storm observed on 29 September 2025

### 3. Rainfall and Water Level Monitoring

### 3.1. Rainfall monitoring

The weekly accumulated rainfall based on the observed data provided by the MRC Member Countries – Cambodia, Lao PDR, Thailand, and Viet Nam – from 23 - 29 September 2025 (**Figure 4**). Heavy rain occurred in the LMB including the upper & lower part of Lao PDR, the central and eastern part of Cambodia, and the 3S basin.



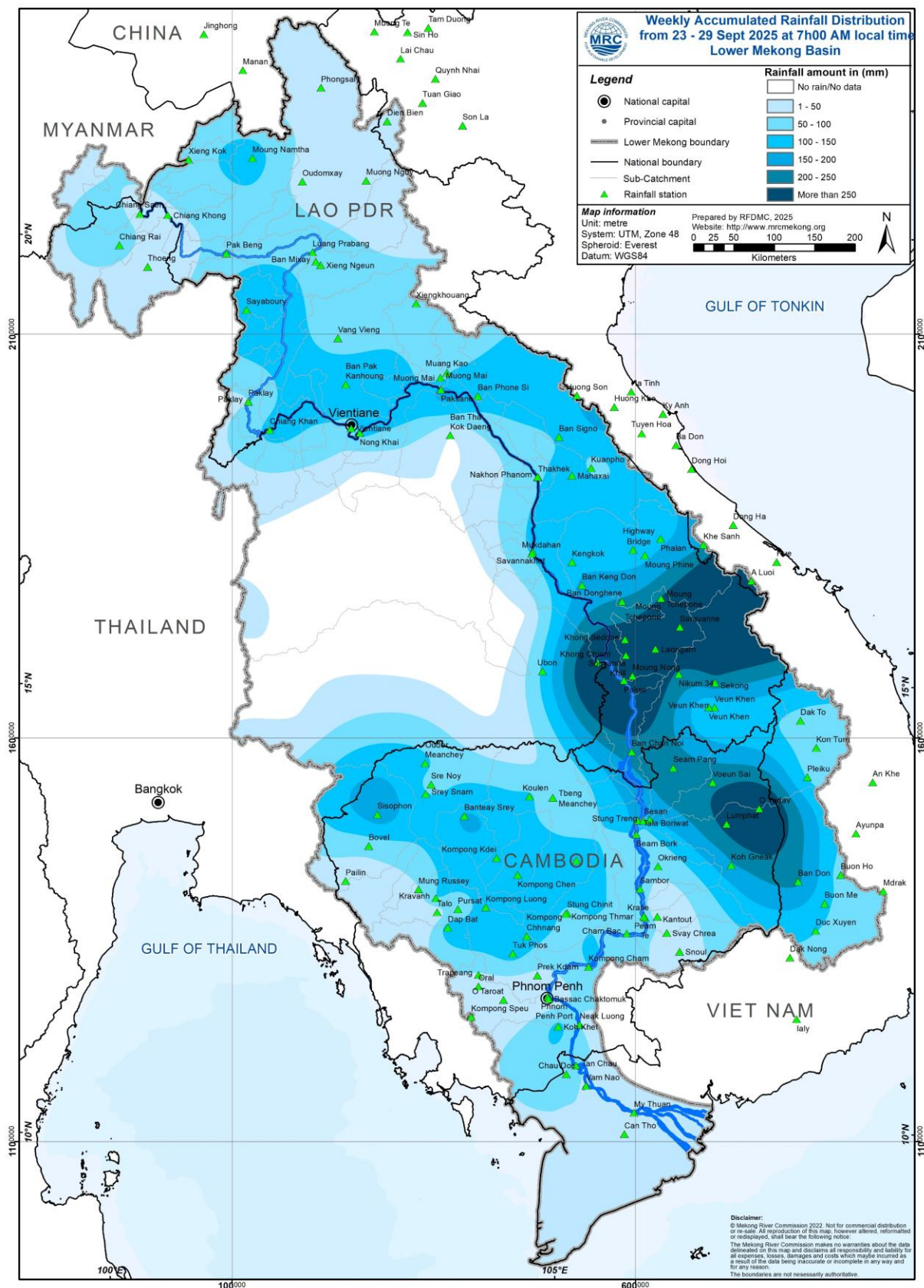


Figure 4: Weekly rainfall distribution over the LMB during 23 – 29 September 2025

### 3.2. Water level monitoring

The hydrological regimes of the Mekong mainstream are illustrated by recorded water levels and flows at key mainstream stations: at Chiang Saen to capture mainstream flows entering from the Upper Mekong Basin (UMB); at Vientiane to present flows generated by climate conditions in the upper part of the LMB; at Pakse to investigate flows influenced by inflows from the larger Mekong tributaries; at Kratie in Cambodia to capture overall flows of the Mekong Basin; and at Viet Nam's Tan Chau and Chau Doc to monitor flows to the Delta.

The key stations along the LMB and their respective model application for River Flood Forecasting during the wet season from June to October and River Monitoring during the dry season from November to May are presented in **Figure 5**. The hydrograph for each key station is available from the MRC's River Flood Forecasting: <http://ffw.mrcmekong.org/overview.php>.

During 23 – 29 September 2025, the observed water level (WL) at Jinghong hydrological station<sup>1</sup>, was almost constant and ranges between 537.05 and 536.58 m, which are corresponding to the outflow between 2,200.00 m<sup>3</sup>/s to 1,810.00 m<sup>3</sup>/s (recorded on 7:00 am), respectively (**Figure 6**). The water level in Chiang Saen Station also indicated a slight fluctuation ranging from 4.52 m to 3.56 m. At the same period, the water level in Luang Prabang Station also decreased with an approximate value of -0.14 m from 11.64 m to 11.50 m as compared to the previous week. In addition, at Chiang Khan, the water level has increased from 9.92 m to 10.15 m.

The water levels at Vientiane, Nongkhai, Paksane, Nakhon Phanom, Thakhek, Mukdahan, Savannakhet, Khong Chiam and Pakse stations have increased from 8.57 m to 8.63 m, 7.99 m to 8.31 m, 9.19 m to 9.72 m, 7.67 m to 8.53 m, 8.92 m to 9.72 m, 7.35 m to 8.49 m, 5.83 m to 6.96 m, 8.91 m to 12.19 m, and 7.10 m to 10.32 m, respectively.

However, the water levels at Stung Treng, Kratie, Kompong Cham, Phnom Penh (Bassac), Phnom Penh Port, Koh Khel, and Prek Kdam stations also have decreased from 7.35 m to 10.40 m, 17.76 m to 21.61 m, 11.86 m to 13.88 m, 8.33 m to 9.04 m, 6.97 m to 7.68 m, 7.22 m to 7.58 m, 5.88 m to 6.38 m, and 7.45 m to 8.06 m, respectively.

Similar to the previous week, the water levels from 23 to 29 September 2025 at Viet Nam's Tan Chau and Chau Doc fluctuated between their LTA values due to daily tidal effects from the sea. At the Tan Chau station, the water levels varied between 3.06 m and 3.21 m, while at the Chau Doc station, they ranged between 2.73 m and 2.71 m.

---

<sup>1</sup> Near-real time data of hydro-meteorological monitoring at the Jinghong hydrological station is available at <https://portal.mrcmekong.org/monitoring/river-monitoring-telemetry>.



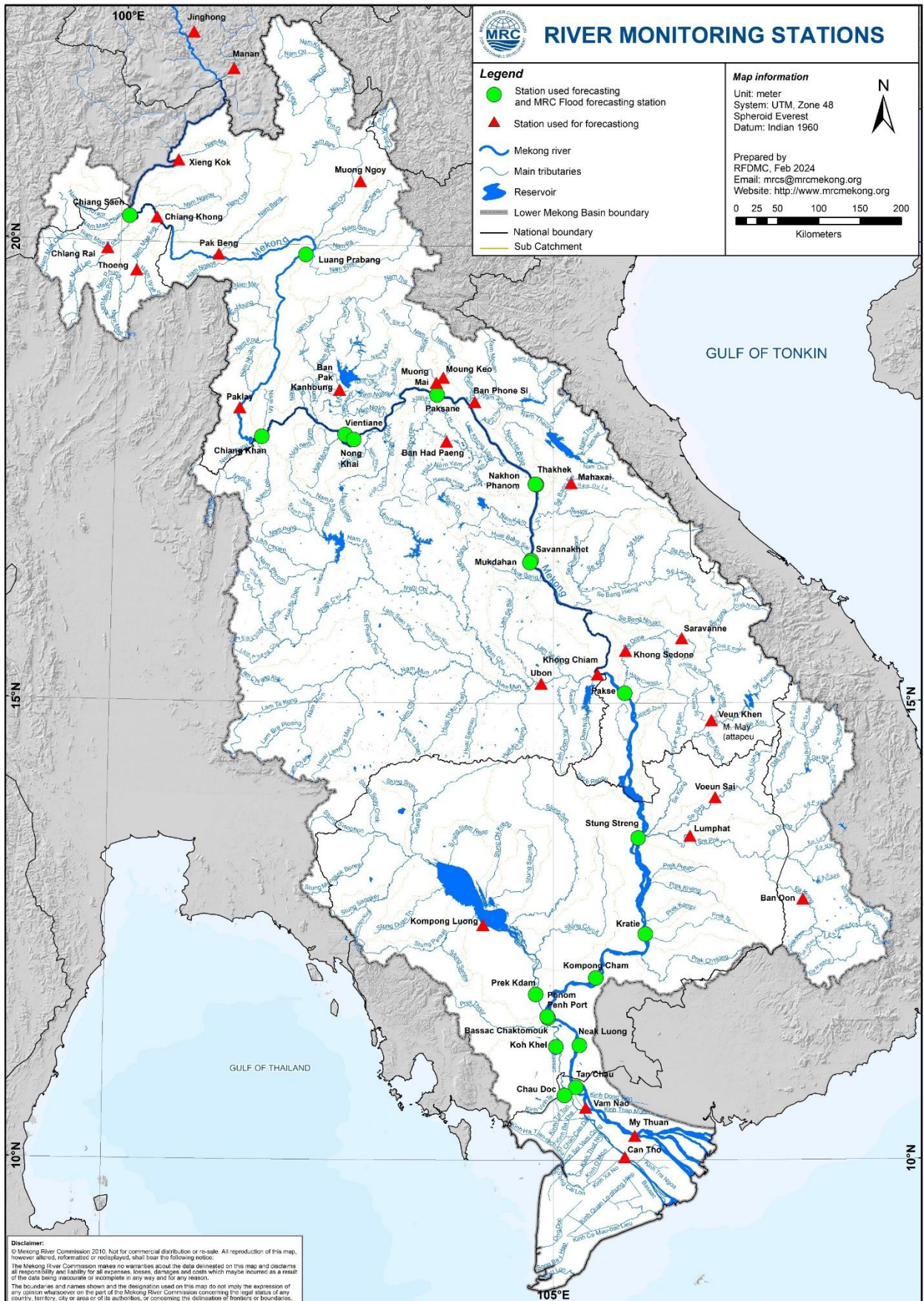
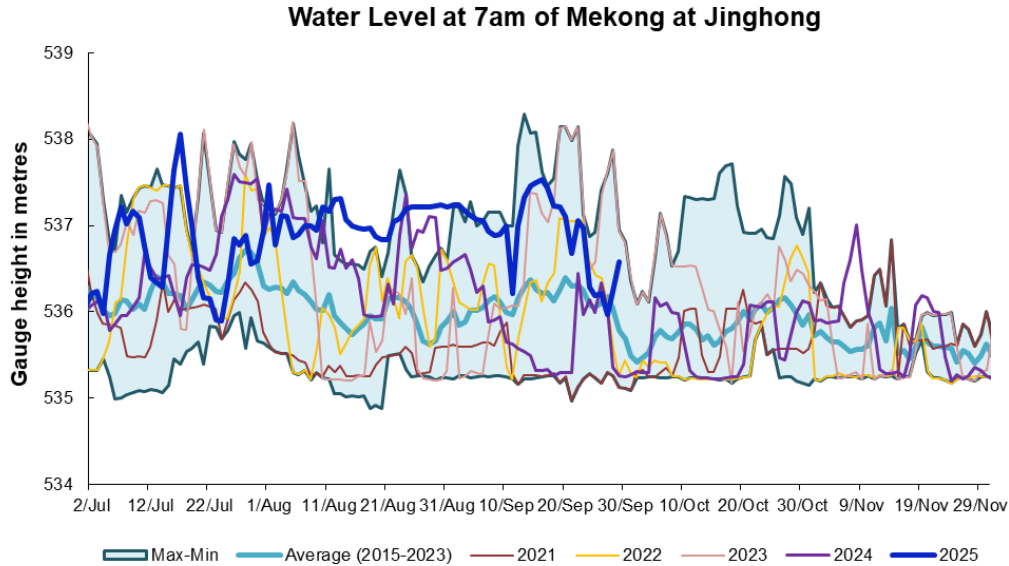


Figure 5: The key stations along LMB for river flood forecasting

The water levels in key monitoring stations on **29 September 2025** are in normal conditions, which have not reached alarm or flood levels. Moreover, all stations with available PMFM thresholds are in normal conditions. The graphics of water level monitoring in all key stations are presented in **Annex A** and the weekly water levels and rainfall at each key station are summarised in **Annex B**.



**Figure 6. Water level at the Jinghong hydrological station up to 29 September 2025.**

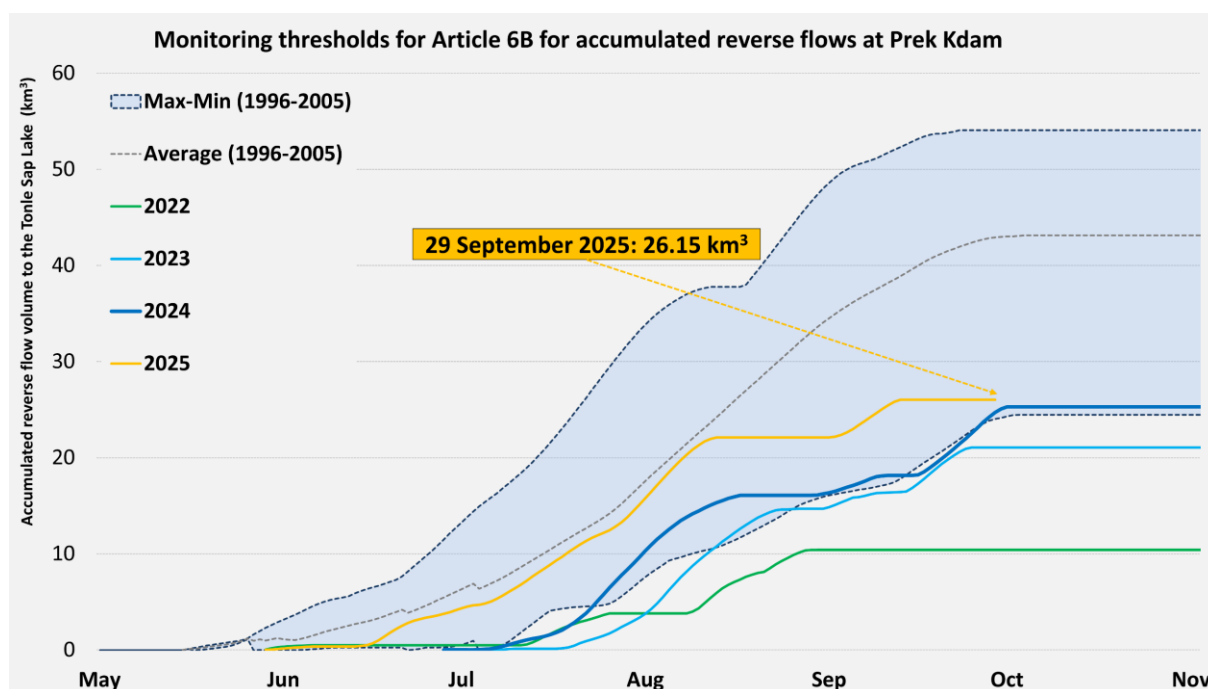
At the end of the wet season, when water levels along the Mekong River subside, the outflow of the Tonle Sap Lake (TSL) returns to the Mekong River and then to the Delta. This phenomenon normally takes place between September and October. Based on flow observation at Prek Kdam monitoring station, the inflow (reverse flow) of the Tonle Sap Lake took place since 29 May 2025.

The inflow flow is calculated based on a formula of rating-curves using by difference of water levels at Kompong Luong and Phnom Penh Port stations for slope and Prek Kdam as cross-section of the Lake. The formula of flow is as follows:

$$Flow = WL_{Prek\ Kdam}^{1.2} \times \sqrt{|WL_{Phnom\ Penh\ Port} - WL_{Kompong\ Luong}|}$$

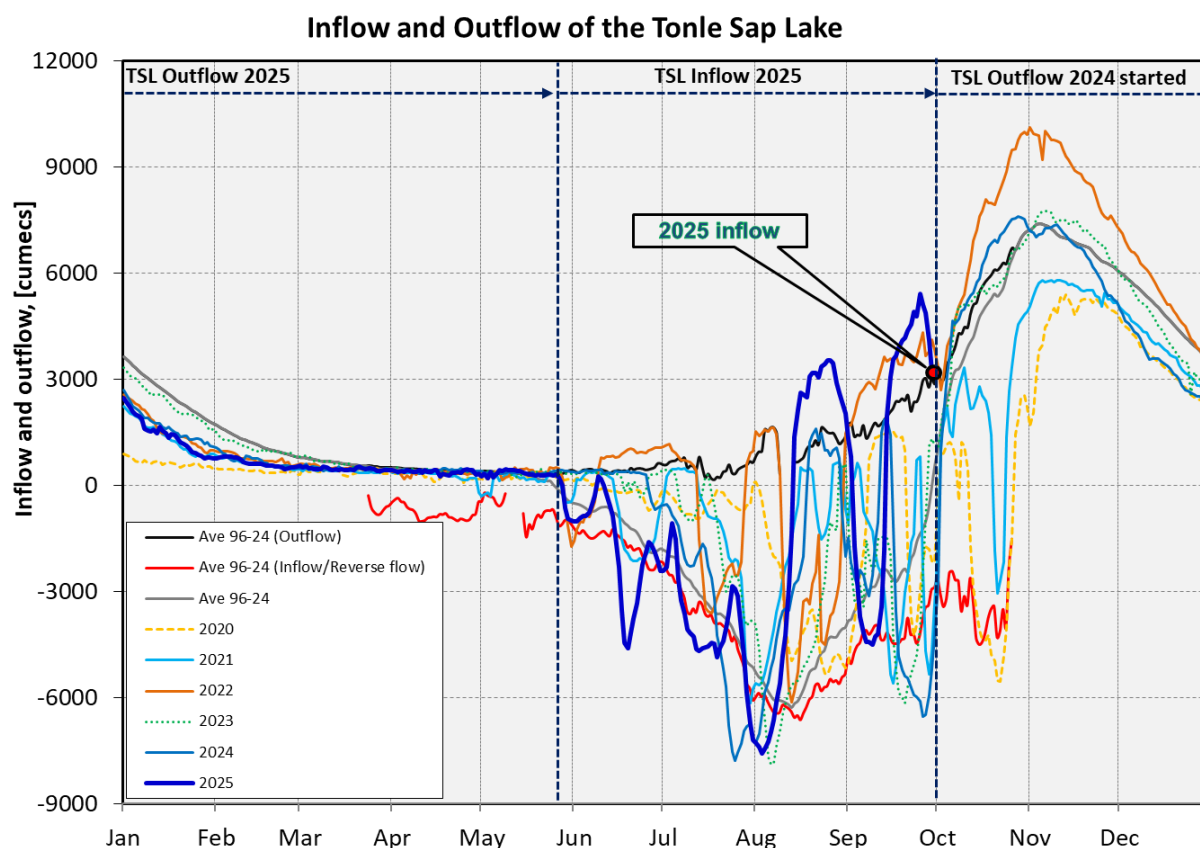
Where, WL is water level in m (msl).

The current total accumulated reverse flow to the lake is **26.15 Km<sup>3</sup> (Figure 7)**. The seasonal changes of the inflow/reverse flow and the outflow of the TSL at Prek Kdam in comparison with the flows of 2020, 2021 and 2022, 2023 and their LTA level (1997-2024) are illustrated in **Figure 8**. Up to **29 September 2025**, it was observed that the inflow to Tonle Sap Lake is relatively higher than its LTA due to significant high inflows from upstream (**Figure 8**).



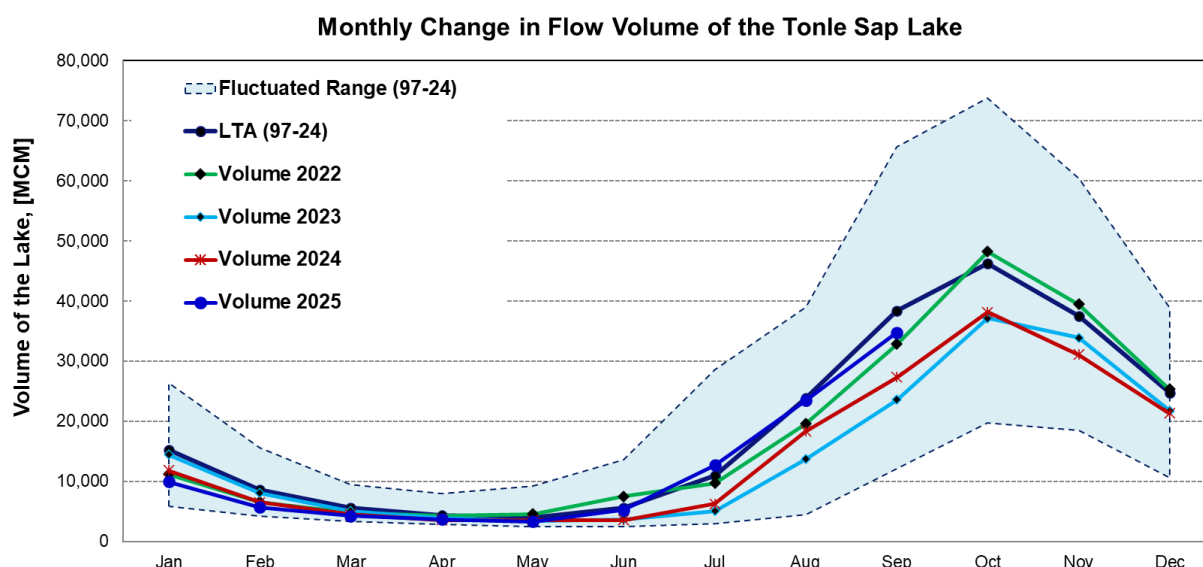
**Figure 7: Total accumulated reverse flow to Tonle Sap Lake updated on 29 September.**

The seasonal changes in monthly flow volumes up to **29 September 2025** for the TSL compared with that in 2020, 2021, 2022, 2023, 2024 and their LTAs, and the fluctuation levels (1997–2024) are presented in **Table 8**. The mean monthly water volume of the Tonle Sap Lake in August 2025 is lower than its LTA (about 98.32 %) and higher than all recent years from 2019 during the same period (**Figure 9 and Table 1**).



**Figure 8: Seasonal change of inflows and outflows of Tonle Sap Lake.**





**Figure 9. The seasonal change in monthly flow volume of Tonle Sap Lake.**

**Table 1. The monthly change in the flow volume of Tonle Sap Lake.**

Month	LTA (97-24) [MCM]	Max Volume [MCM]	Min Volume [MCM]	Volume 2019 [MCM]	Volume 2020 [MCM]	Volume 2021 [MCM]	Volume 2022 [MCM]	Volume 2023 [MCM]	Volume 2024 [MCM]	Volume 2025 [MCM]	Volume in 2025 [%], compared with its LTA
Jan	15197.93	26357.53	5906.80	13080.39	10285.31	5906.80	9923.80	11214.32	14422.11	10341.91	68.05
Feb	8644.19	15596.22	4198.60	7302.32	6019.30	4264.19	5832.97	6558.79	8069.29	5690.52	65.83
Mar	5564.35	9438.24	3347.07	4852.74	4354.62	3553.99	4264.88	4736.52	5080.64	4256.33	76.49
Apr	4300.28	8009.14	2866.91	4282.78	3667.47	2992.61	3556.68	4288.31	3884.16	3697.92	85.99
May	4009.61	9176.93	2417.81	4356.44	3266.43	2594.92	3240.78	4556.83	3438.66	3322.45	82.86
Jun	5624.02	13635.01	2468.70	8465.20	3517.06	2641.88	3798.29	7489.04	3689.97	5278.20	93.85
Jul	11012.31	28599.56	2925.86	14964.58	4001.99	2925.86	5346.73	9703.79	5062.21	12706.40	115.38
Aug	23865.05	39015.12	4433.46	23407.37	7622.71	5941.07	10547.80	19554.70	13694.57	23464.06	98.32
Sep	38377.57	65632.35	12105.31	39654.01	24194.19	12105.31	16382.34	32860.34	23550.60	34746.65	90.54
Oct	46261.30	73757.23	19705.50	41847.54	30358.38	20799.13	27318.21	48199.12	37141.40		
Nov	37500.63	60367.33	18534.61	33663.58	19112.65	27546.80	28982.93	39452.53	33929.52		
Dec	24795.31	38888.95	10563.49	23079.82	10577.29	18251.65	20170.76	25346.65	21757.70		
Critical situation: lower than long-term minimum values (LTMIN)											
Normal condition: within the range of long-term average (LTA) and max (LTMAX) values											
Low volume situation: lower than long-term average (LTA)											
Unit: Million Cubic Meter (1 MCM= 0.001 Km <sup>3</sup> )											

**Remarks:** the volume of Tonle Sap Lake in 2025 is updated until 29 September 2025.

## 4. Flash Flood in the Lower Mekong Basin

During the weekly monitoring period from 23 – 29 September, the LMB received light to very heavy rain and thunderstorms in some areas.

According to the Southeast Asian Flash Flood Guidance System (SEAFFGS) and analysis, flash flood guidance was detected at low to high level in the next 1, 3 and 6 hours in some areas in Cambodia, Lao PDR, Thailand, and Viet Nam during the reporting period as shown in **Figure 10 & Table 2**.

**Table 2. Detected flash flood in the LMB on 29 September**

FLASH FLOOD GUIDANCE IN CAMBODIA								
In the next 1hrs			In the next 3hrs			In the next 6hrs		
Provinces	Districts	Level	Provinces	Districts	Level	Provinces	Districts	Level
Kampong Cham	Stueng Trang	High	Kampong Cham	Stueng Trang	Moderate	Kampong Cham	Stueng Trang	High
Kratie	Preaek Prasab	Moderate	Mondul Kiri	Kaoh Nheaek	High	Mondul Kiri	Kaoh Nheaek	High
Mondul Kiri	Kaoh Nheaek	High	Mondul Kiri	Ou Reang	Moderate	Mondul Kiri	Ou Reang	Moderate
Mondul Kiri	Ou Reang	Moderate	Mondul Kiri	Pechr Chenda	Moderate	Mondul Kiri	Pechr Chenda	Moderate
Mondul Kiri	Pechr Chenda	High	Preah Vihear	Chhaeb	Moderate	Preah Vihear	Chhaeb	Moderate
Otdar Meanchey	Anlong Veaeng	Moderate	Ratana Kiri	Andoung Meas	High	Ratana Kiri	Andoung Meas	High
Preah Vihear	Chhaeb	High	Ratana Kiri	Ban Lung	Moderate	Ratana Kiri	Ban Lung	Moderate
Ratana Kiri	Andoung Meas	High	Ratana Kiri	Koun Mom	High	Ratana Kiri	Koun Mom	High
Ratana Kiri	Ban Lung	Moderate	Ratana Kiri	Ou Chum	Moderate	Ratana Kiri	Ou Chum	High
Ratana Kiri	Bar Kaev	Moderate	Ratana Kiri	Ta Veaeng	High	Ratana Kiri	Ta Veaeng	High
Ratana Kiri	Koun Mom	High	Ratana Kiri	Veun Sai	High	Ratana Kiri	Veun Sai	High
Ratana Kiri	Ou Chum	High	Stung Treng	Sesan	Moderate	Stung Treng	Sesan	High
Ratana Kiri	Ta Veaeng	High	Stung Treng	Siem Bouk	Moderate	Stung Treng	Siem Bouk	Moderate
Ratana Kiri	Veun Sai	High	Stung Treng	Siem Pang	High	Stung Treng	Siem Pang	High
Stung Treng	Sesan	High	Stung Treng	Thala Barivat	High	Stung Treng	Thala Barivat	High
Stung Treng	Siem Bouk	Moderate						
Stung Treng	Siem Pang	High						
Stung Treng	Thala Barivat	High						

FLASH FLOOD GUIDANCE IN LAO PDR								
In the next 1hrs			In the next 3hrs			In the next 6hrs		
Provinces	Districts	Level	Provinces	Districts	Level	Provinces	Districts	Level
Champasak	Champasac	Moderate	Champasak	Phonthong	Moderate	Champasak	Phonthong	Moderate
Champasak	Pathoomph	Moderate	Khammuane	Thakhek	Moderate	Khammuane	Thakhek	Moderate
Champasak	Phonthong	Moderate	Khammuane	Xaybouath	High	Khammuane	Xaybouath	High
Khammuane	Thakhek	Moderate	Saravane	Toomlarn	Moderate	Savannakhet	Vilabuly	Moderate
Khammuane	Xaybouath	High	Savannakhet	Vilabuly	Moderate			
Saravane	Samuoi	Moderate						
Saravane	Toomlarn	Moderate						
Savannakhet	Thapangth	Moderate						
Savannakhet	Vilabuly	Moderate						
Sekong	Dakcheung	Moderate						
Sekong	Thateng	Moderate						
Xaysomboun	Longxan	Moderate						

FLASH FLOOD GUIDANCE IN THAILAND								
In the next 1hrs			In the next 3hrs			In the next 6hrs		
Provinces	Districts	Level	Provinces	Districts	Level	Provinces	Districts	Level
Buriram	Phutthaisong	Moderate	Buriram	Phutthaisong	Moderate	Buriram	Phutthaisong	Moderate
Mukdahan	Don Tan	Moderate	Mukdahan	Muang Mukdahan	Moderate	Mukdahan	Muang Mukdahan	Moderate

FLASH FLOOD GUIDANCE IN THAILAND								
In the next 1hrs			In the next 3hrs			In the next 6hrs		
Provinces	Districts	Level	Provinces	Districts	Level	Provinces	Districts	Level
Mukdahan	Kamchai	Moderate	Nakhon Ratchasima	Khong	Moderate	Nakhon Ratchasima	Khong	Moderate
Mukdahan	Muang Mukdahan	Moderate	Roi Et	Kaset Wisai	Moderate	Roi Et	Kaset Wisai	Moderate
Nakhon Ratchasima	Chakrat	Moderate	Si Saket	Prang Ku	Moderate	Si Saket	Prang Ku	Moderate
Nakhon Ratchasima	Khong	Moderate	Surin	Sangkha	Moderate	Surin	Sangkha	High
Nakhon Ratchasima	Lam Tha Men Chai	Moderate	Surin	Sikhoraphum	Moderate	Surin	Sikhoraphum	Moderate
Roi Et	Kaset Wisai	High	Ubon Ratchathani	Si Muang Mai	Moderate	Ubon Ratchathani	Si Muang Mai	Moderate
Si Saket	Kantharalak	Moderate	Ubon Ratchathani	Warin Chamrap	High	Ubon Ratchathani	Warin Chamrap	High
Si Saket	Prang Ku	Moderate						
Si Saket	Si Ratana	Moderate						
Surin	Bua Ched	Moderate						
Surin	Sangkha	High						
Surin	Sikhoraphum	Moderate						
Ubon Ratchathani	Si Muang Mai	Moderate						
Ubon Ratchathani	Warin Chamrap	High						
Yasothon	Loeng Nok Tha	Moderate						

FLASH FLOOD GUIDANCE IN VIET NAM								
In the next 1hrs			In the next 3hrs			In the next 6hrs		
Provinces	Districts	Level	Provinces	Districts	Level	Provinces	Districts	Level
Dak Lak	Buon Don	Moderate	Gia Lai	Duc Co	High	Gia Lai	Duc Co	High
Dak Lak	Cu Jut	Moderate	Gia Lai	Ia Grai	Moderate	Gia Lai	Ia Grai	Moderate
Dak Lak	Cu M'Gar	Moderate	Gia Lai	Mang Yang	Moderate	Gia Lai	Mang Yang	Moderate
Dak Lak	Dak Mil	Moderate	Gia Lai	TX. PleiKu	Moderate	Gia Lai	TX. PleiKu	Moderate
Dak Lak	Dak Nong	Moderate						
Gia Lai	Chu Se	Moderate						
Gia Lai	Duc Co	High						
Gia Lai	Ia Grai	Moderate						
Gia Lai	Mang Yang	Moderate						
Gia Lai	TX. PleiKu	Moderate						
Kon Tum	Dak Glei	Moderate						
Kon Tum	Ngoc Hoi	Moderate						

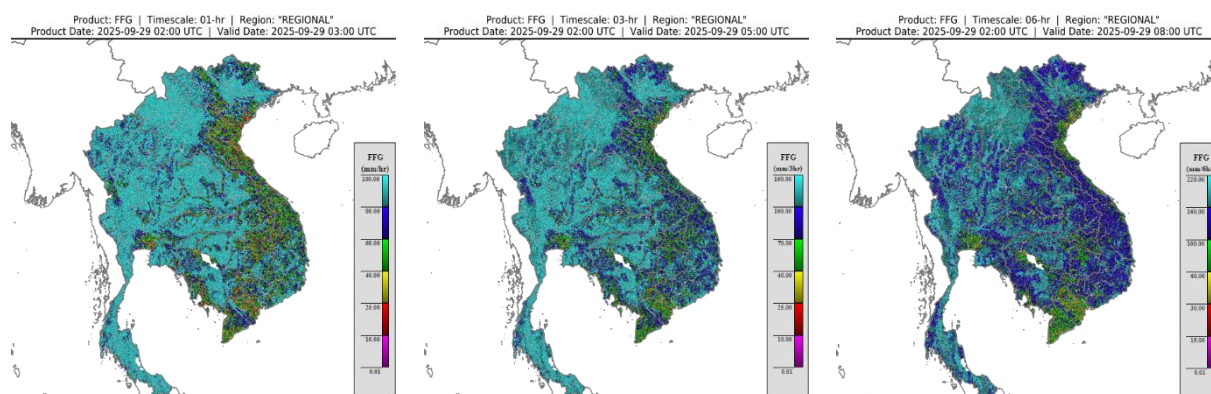


Figure 10. Flash Flood Guidance for the next 1-hr, 3-hr and 6-hr on 29 September

## 5. Drought Monitoring in the Lower Mekong Basin

### 5.2. Weekly drought monitoring from 23 - 29 September 2025

Drought monitoring data for 2025 are available from Monday to Sunday every week; thus, the reporting period is normally delayed by one day compared to Flood and Flash Flood reports. We adopt the Index of Soil Water Fraction (ISWF) data obtained from FFGS to represent soil moisture of agricultural indicator for both dry and wet seasons.

- **Weekly Standardised Precipitation Index (SPI1)**

Meteorological indicator shows that from 23 - 29 September, as shown in Figure 9, the LMB were facing normal to wet conditions.

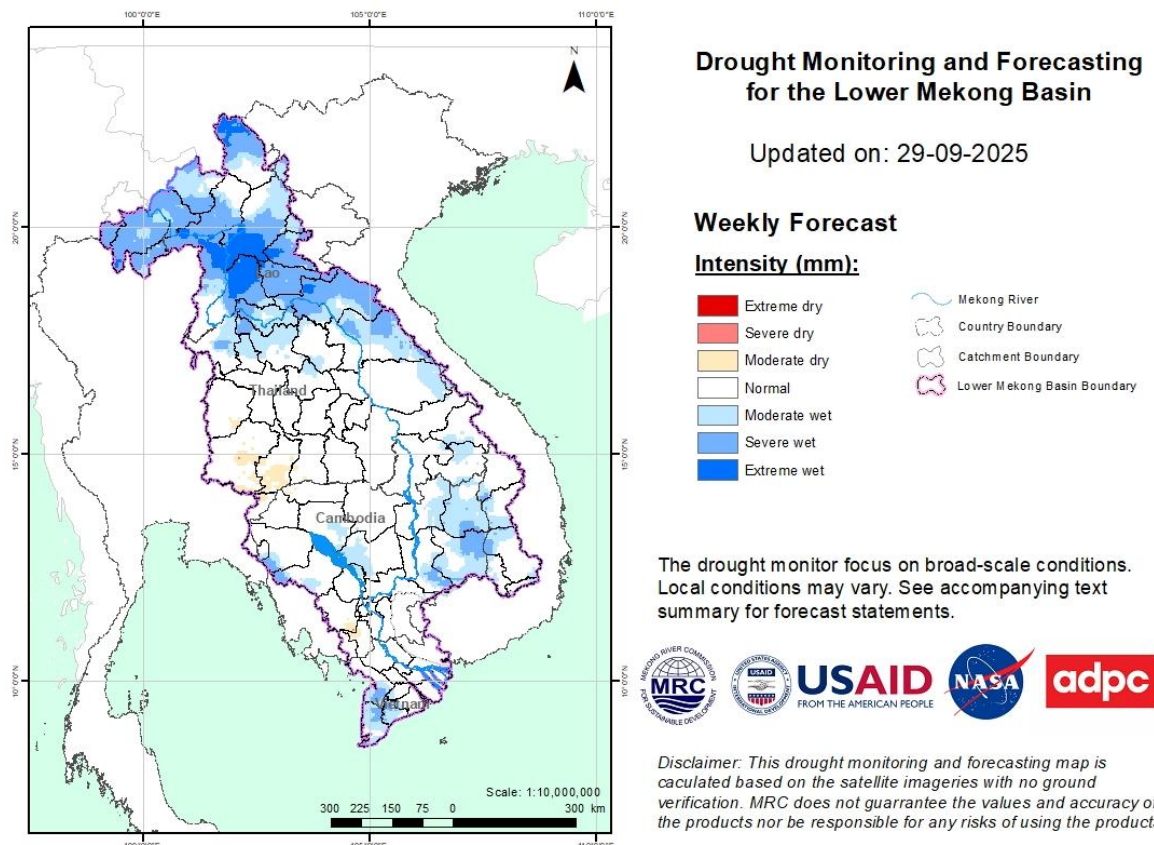
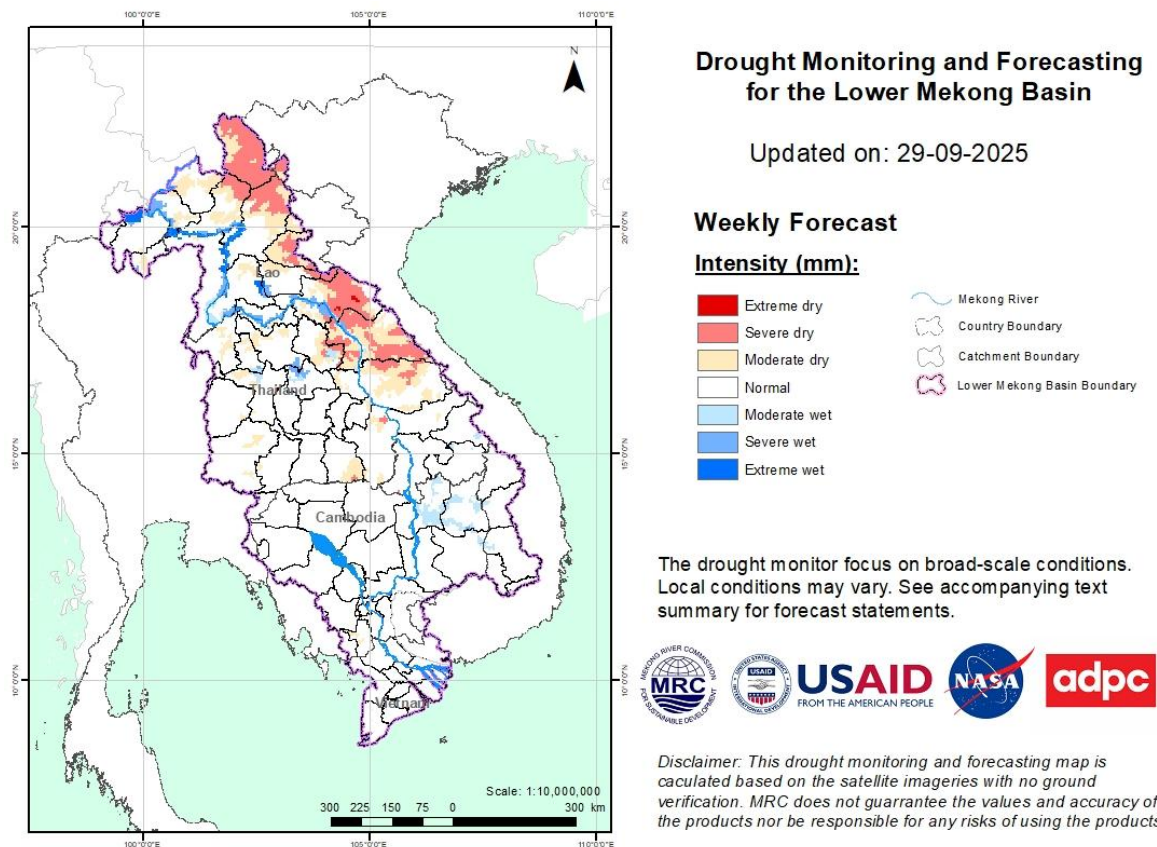


Figure 11: Weekly standardized precipitation index from 23 - 29 September

- **Weekly Index of Soil Water Fraction (ISWF)**

No drought over the LMB by the Index of Soil Water Fraction, as displayed in **Figure 10**, during the monitoring week from 23 - 29 September. the LMB was facing normal to wet conditions, except some areas in the northern and central part of Lao PDR and northeastern part of Thailand.



**Figure 12: Weekly Index of Soil Water Fraction from 23 - 29 September.**

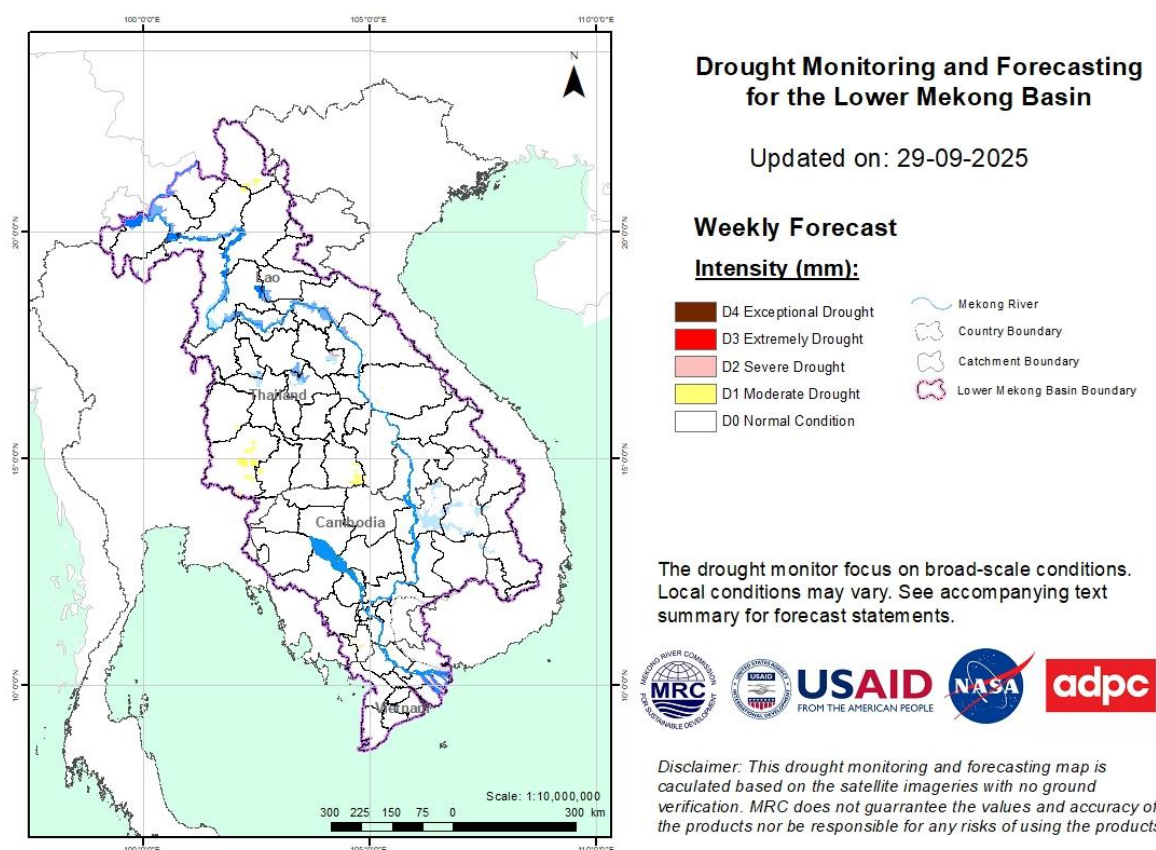
- **Weekly Combined Drought Index (CDI)**

The combined drought indicator, **Figure 11**, shows that no drought in most areas, except some areas experienced moderate drought. The impacted areas are listed below:

Number	Country	Province	Moderate	Severe	Extreme	Exceptional	Number	Country	Province	Moderate	Severe	Extreme	Exceptional
1	Cambodia	Preah Vihear					4	Thailand	Buri Ram				
2	Lao PDR	Oudomxai					5	Thailand	Chaiyaphum				
3	Lao PDR	Phongsali					6	Thailand	Nakhon Ratchasima				
							7	Thailand	Si Sa Ket				
							8	Thailand	Ubon Ratchathani				
Other provinces of the Mekong Delta of Viet Nam have no data													

**Note:** S: short-term drought, less than 1 months; L: long-term drought, more than 1 month





**Figure 13: Weekly Combined Drought Index from 23 - 29 September**

More information on Drought Forecasting and Early Warning (DFEW) as well as the explanation is available here: <http://droughtforecast.mrcmekong.org/templates/view/our-product>. DFEW provides not only weekly monitoring and forecasting information but also a three-month forecast of drought indicators with seasonal outlook which are updated every month based on international weather forecast models. Details on drought forecast are described in section 6.4 of this report.

## 6 Weather and Water Level Forecast and Flash Flood information

### 6.1 Rainfall forecast

During 30 September - 04 October 2025, the accumulated rainfall over the entire Lower Mekong Basin is distributed with light to heavy rain based on CHIRPS-GFS (**Figure 12**). Thunderstorm and moderate to heavy rain are expected in the central part of the LMB including the upper and central part of Lao PDR, the northern and northeastern part of Thailand, the western and eastern part of Cambodia, the Mekong delta, and the 3S basin.

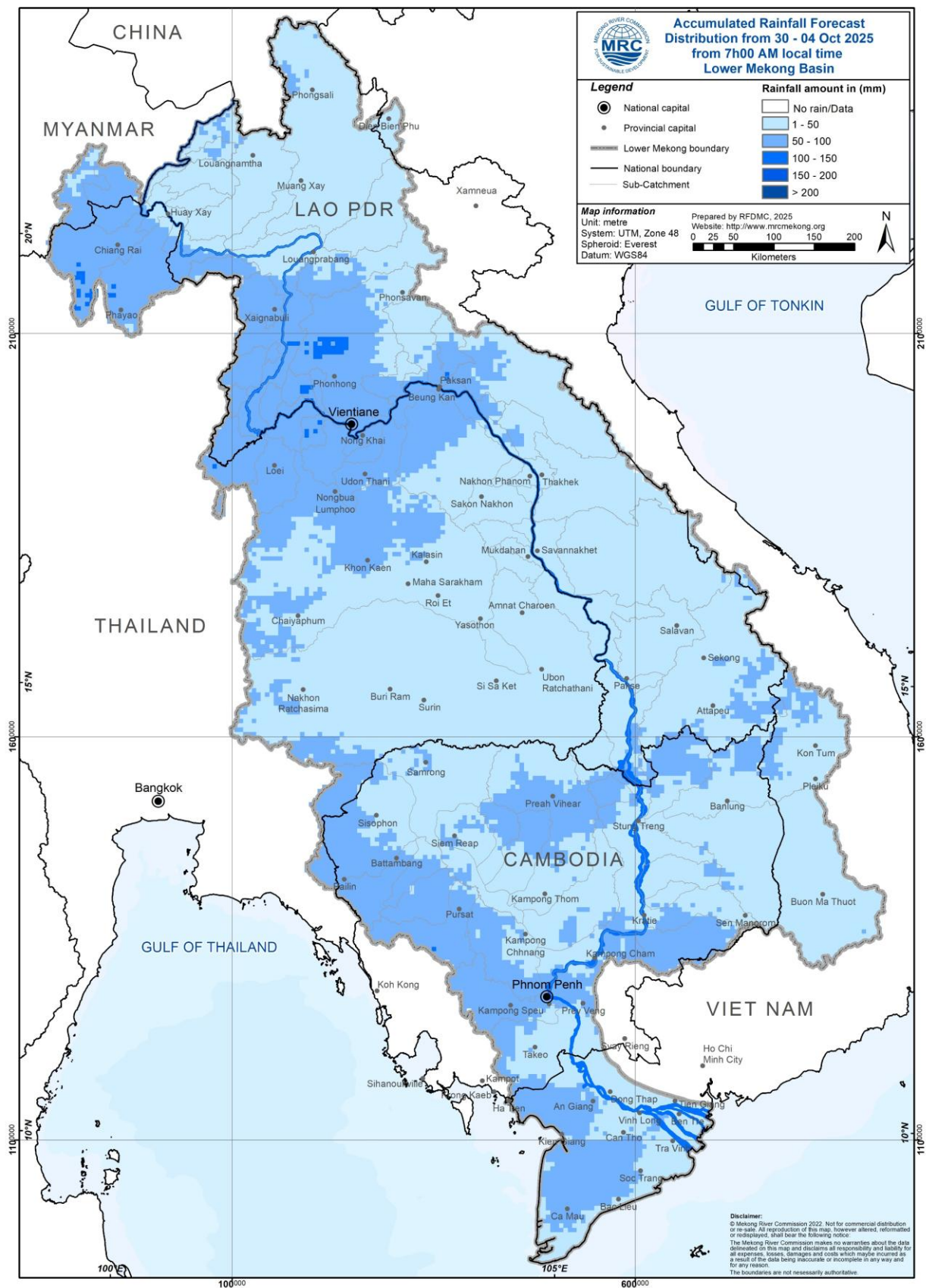


Figure 14: Accumulated rainfall forecast from CHIRPS-GFS (30 September – 04 October 2025)

## 6.2 Water level forecast

During the wet season, from June 1<sup>st</sup> to October 31<sup>st</sup> each year, daily riverine flood forecasts are conducted for 22 stations along the Mekong mainstream, with a forecast lead time of five days. This report will describe the forecast water level for a period of **30 September – 04 October 2025**. Water levels at all stations along the Mekong mainstream are expected to rise. However, water levels at Khong Chiam, Stung Treng, and Kratie stations are expected to reach alarm level on 03 October, while at Pakse station, it is expected to reach alarm level on 02 October within the next 5 days. Water levels at Tan Chau and Chau Doc are fluctuated following the tidal fluctuation.

In Chiang Saen monitoring station, the water level is expected to be fluctuated over the forecasting period of **30 September – 04 October 2025** with increasing trend. The water level in Luang Prabang stations affected by backwater is likely slightly increasing within a range from 11.50 m to 11.97 m. In addition, at Chiang Khan, Vientiane, Nongkhai and Paksane stations, the water levels are also expected to rise approximately 0.47 m, 0.72 m, 0.77 m, and 0.47 m, respectively.

The water levels at Nakhon Phanom, Thakhek, Mukdahan, Savannakhet, Khong Chiam, and Pakse station, are expected to rise with approximate value of 0.64 m, 0.66 m, 0.78 m, 0.79 m, 1.24 m, and 0.77 m, respectively. Moreover, at Stung Treng, Kratie and Kompong Cham stations, the water levels are also expected to increase approximately 0.40 m, 0.56 m, and 0.54 m, respectively.

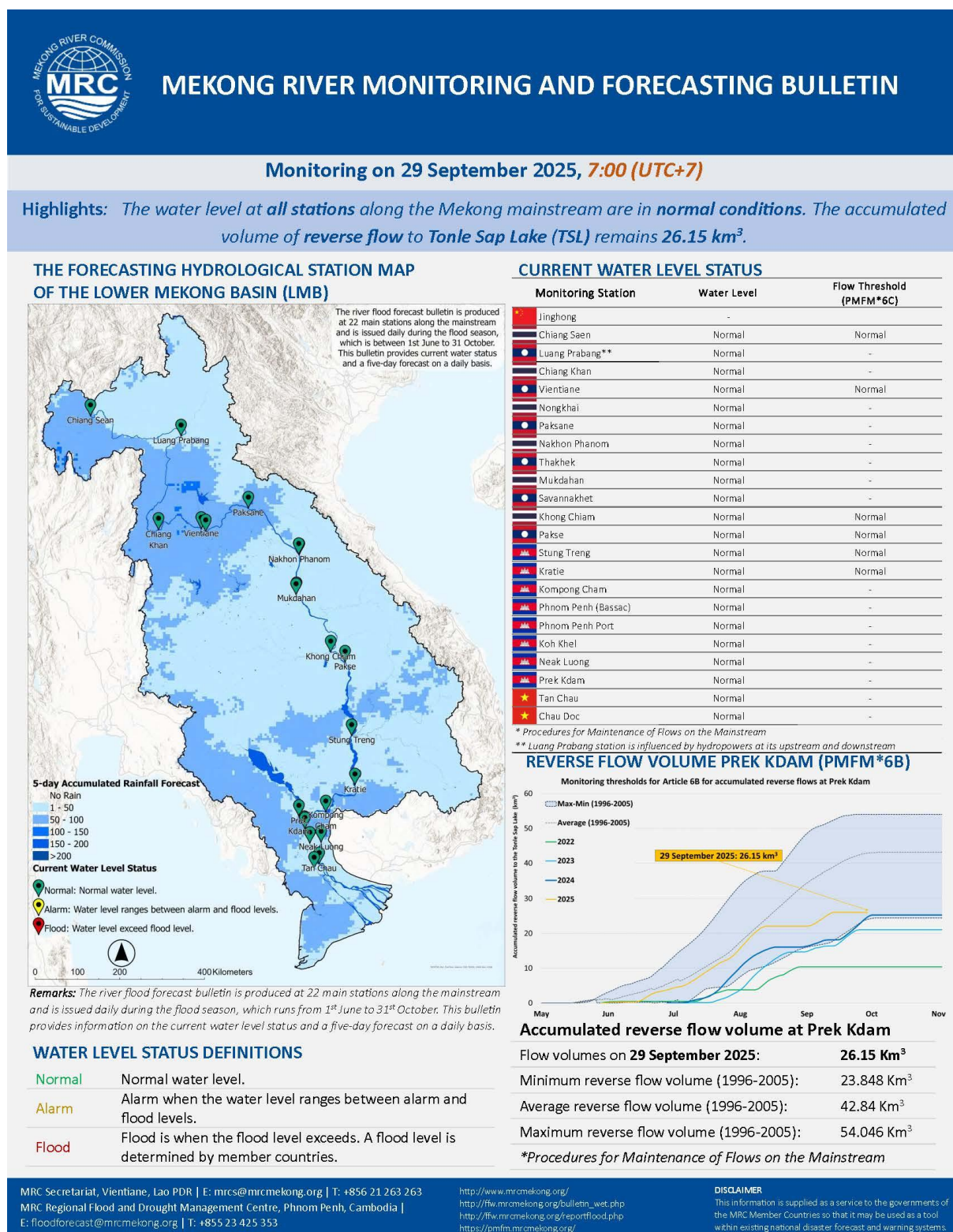
At the floodplain in Cambodia from Phnom Penh (Bassac) station downstream, the water levels are also expected to increase. At Phnom Penh (Bassac), Phnom Penh Port, Koh Khel, Neak Luong, and Prek Kdam, the water levels are expected to increase approximately 0.25 m, 0.20 m, 0.16 m, 0.25 m, and 0.27 m, respectively.

For the Tan Chau station on the Mekong River and Chau Doc station on the Bassac River, water levels will be fluctuating approximately ranging between 3.21 & 3.38 m and 2.59 m & 2.88 m, respectively, following daily tidal effects from the sea.

The weekly River Monitoring Bulletin and forecasting issued on **29 September 2025** can be found in **Table 2**. Results of the weekly river monitoring and forecasting bulletin are also available at <http://ffw.mrcmekong.org/bulletin.php>






















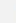
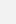


Table 3. River Monitoring and Forecasting Bulletin.



## Forecasting from 30 September to 04 October 2025

**Highlights:** Heavy rainfall is likely to occur central to upper parts of LMB. Water levels at all stations are expected to rise. Water levels at Khong Chiam, Pakse, Stung Treng and Kratie are expected to reach **ALARM LEVELS**.

Forecasting Station	24 h Observed Rainfall (mm)	Zero gauge above M.S.L (m)	Observed Water Level against zero gauge (m)		Forecasted Water Level (m)					Alarm Level (m)	Flood Level (m)	Low- lying flood level (m)*	Forecasted Water Levels Change in 5 days (m)	Max. Water levels change within next 5 days (m)	Min. distance to alarm level within next 5 days (m)	Min. distance to flood level within next 5 days (m)
	28-Sep		28-Sep	29-Sep	30-Sep	01-Oct	02-Oct	03-Oct	04-Oct							
 Jinghong	0.0	-	536.24	↑ 536.58	-	-	-	-	-	-	-	-	-	-	-	-
 Chiang Saen	0.0	357.110	3.81	↓ 3.56	↓ 3.44	↑ 3.60	↑ 3.81	↑ 4.09	→ 4.16	11.50	12.80	-	↑ 0.60	0.60	7.34	8.64
 Luang Prabang	0.0	267.195	12.14	↓ 11.50	↓ 11.30	→ 11.39	↑ 11.63	↑ 11.80	↑ 11.97	17.50	18.00	-	↑ 0.47	0.47	5.53	6.03
 Chiang Khan	0.0	194.118	10.41	↓ 10.15	↓ 9.96	→ 10.05	↑ 10.34	↑ 10.55	→ 10.62	14.50	16.00	-	↑ 0.47	0.47	3.88	5.38
 Vientiane	0.0	158.040	8.64	↓ 8.63	→ 8.65	↑ 8.76	↑ 8.95	↑ 9.25	→ 9.35	11.50	12.50	-	↑ 0.72	0.72	2.15	3.15
 Nongkhai	0.0	153.648	8.20	↑ 8.31	↑ 8.46	↑ 8.58	↑ 8.72	↑ 9.00	→ 9.08	11.40	12.20	7.35	↑ 0.77	0.77	2.32	3.12
 Paksane	11.3	142.125	9.52	↑ 9.72	↑ 9.92	↑ 10.34	↑ 10.53	↑ 10.45	↓ 10.19	13.50	14.50	-	↑ 0.47	0.81	2.97	3.97
 Nakhon Phanom	11.3	130.961	8.41	↑ 8.53	↑ 8.80	↑ 9.16	↑ 9.41	→ 9.35	↓ 9.17	11.50	12.00	9.04	↑ 0.64	0.88	2.09	2.59
 Thakhek	14.8	129.629	9.60	↑ 9.72	↑ 9.99	↑ 10.37	↑ 10.62	↑ 10.56	↓ 10.38	13.00	14.00	-	↑ 0.66	0.90	2.39	3.39
 Mukdahan	36.5	124.219	8.49	→ 8.49	↑ 8.70	↑ 9.04	↑ 9.36	→ 9.43	↓ 9.27	12.00	12.50	-	↑ 0.78	0.94	2.57	3.07
 Savannakhet	65.2	124.219	6.95	→ 6.96	↑ 7.13	↑ 7.50	↑ 7.84	→ 7.92	↓ 7.75	12.00	13.00	-	↑ 0.79	0.96	4.09	5.09
 Khong Chiam	83.8	89.030	11.84	↑ 12.19	↑ 12.49	↑ 13.00	↑ 13.32	↑ 13.51	→ 13.43	13.50	14.50	-	↑ 1.24	1.32	-0.01	0.99
 Pakse	82.2	86.490	10.06	↑ 10.32	↑ 10.68	↑ 10.83	↑ 11.01	↑ 11.14	↓ 11.09	11.00	12.00	-	↑ 0.77	0.82	-0.14	0.86
 Stung Treng	8.5	36.790	10.52	↓ 10.40	↑ 10.38	↑ 10.57	↑ 10.65	↑ 10.74	→ 10.80	10.70	12.00	-	↑ 0.40	0.40	-0.10	1.20
 Kratie	0.0	-1.080	21.40	↑ 21.61	↓ 21.57	↑ 21.66	↑ 21.94	↑ 22.07	→ 22.17	22.00	23.00	-	↑ 0.56	0.56	-0.17	0.83
 Kompong Cham	7.0	-0.930	13.50	↑ 13.88	↑ 14.02	↑ 14.10	↑ 14.24	↑ 14.34	→ 14.42	15.20	16.20	-	↑ 0.54	0.54	0.78	1.78
 Phnom Penh (Bassac)	0.9	-1.020	8.89	↑ 9.04	↑ 9.10	↑ 9.16	↑ 9.20	↑ 9.25	↑ 9.29	10.50	12.00	-	↑ 0.25	0.25	1.21	2.71
 Phnom Penh Port	nr	0.070	7.50	↑ 7.68	→ 7.70	↑ 7.75	↑ 7.79	↑ 7.84	↑ 7.88	9.50	11.00	-	↑ 0.20	0.20	1.62	3.12
 Koh Khel	0.0	-1.000	7.47	↑ 7.58	↑ 7.65	↑ 7.69	→ 7.71	→ 7.73	→ 7.74	7.90	8.40	-	↑ 0.16	0.16	0.16	0.66
 Neak Luang	8.6	-0.330	6.26	↑ 6.38	↑ 6.49	↑ 6.56	↑ 6.59	→ 6.61	→ 6.63	7.50	8.00	-	↑ 0.25	0.25	0.87	1.37
 Prek Kdam	13.4	0.080	7.92	↑ 8.06	↑ 8.16	↑ 8.22	↑ 8.26	↑ 8.30	→ 8.33	9.50	10.00	-	↑ 0.27	0.27	1.17	1.67
 Tan Chau	19.7	0.000	3.15	↑ 3.21	↑ 3.30	↑ 3.34	→ 3.36	→ 3.37	→ 3.38	3.50	4.50	-	↑ 0.17	0.17	0.12	1.12
 Chau Doc	0.0	0.000	2.66	↓ 2.59	↑ 2.80	↑ 2.84	→ 2.86	→ 2.87	→ 2.88	3.00	4.00	-	↑ 0.29	0.29	0.12	1.12

\*: Low-lying flood levels have been requested by Thailand to be included for specific stations including Nongkhai (7.35 m), Nakhon Phanom (9.04 m) and Beung Kan (7.58 m) stations

### WATER LEVEL FORECASTING DEFINITIONS

↑	Rising water level.
→	Stable water level: stable water level is defined as a daily change of less than 10cm from Chaing Saen to Savannakhet; less than 5cm at Pakse and Stung Treng; and no more than 3cm from Kratie downstream.
↓	Falling water level.
X	No data available.
Alarm stage	Alarm stage is when the water level ranges between alarm and flood levels.
Flood stage	Flood stage is when the flood level exceeds. A flood level is determined by member countries.

### NOTES

- On 29 September, water levels at all stations along the Mekong mainstream are in normal conditions. The total accumulated reverse flow volume into the TSL is **26.15 km<sup>3</sup>**.
- In the next 5 days, particularly on 30 September, heavy rain is likely to occur in the northern and central part of Lao PDR, the northeastern part of Thailand near Laos' border, and the northern part of Thailand.
- For 30 September – 04 October, water levels at all stations along the Mekong mainstream are expected to rise. Water levels at Khong Chiam, Stung Treng and Kratie are expected to reach **ALARM LEVEL** on 03 October, while at Pakse, it is expected to reach **ALARM LEVEL** on 02 October.

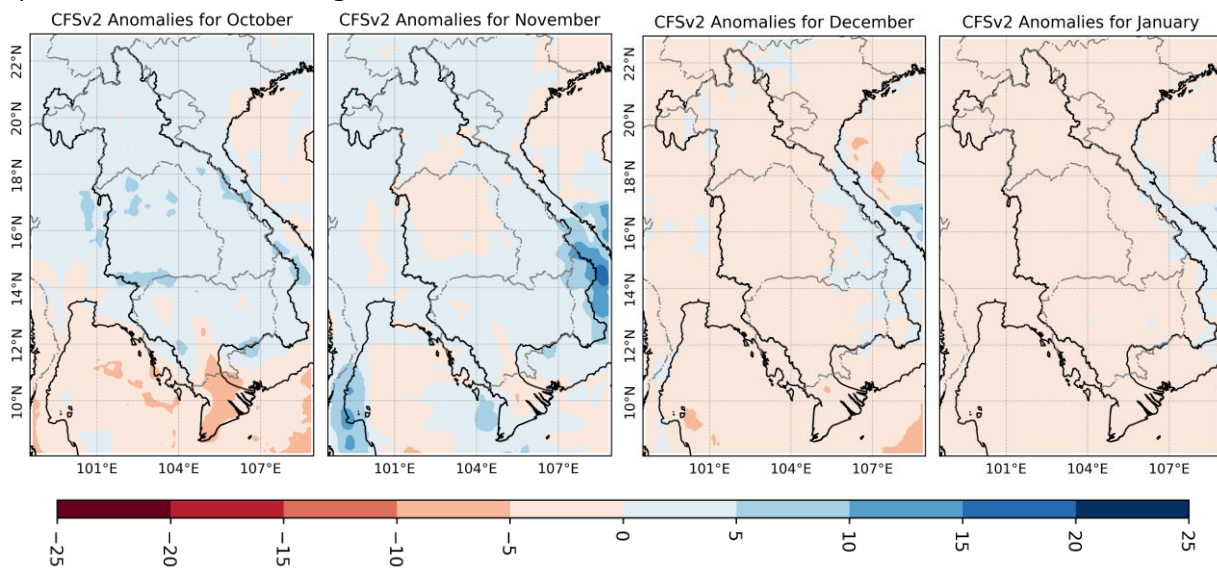


### 6.3 Flash Flood Information

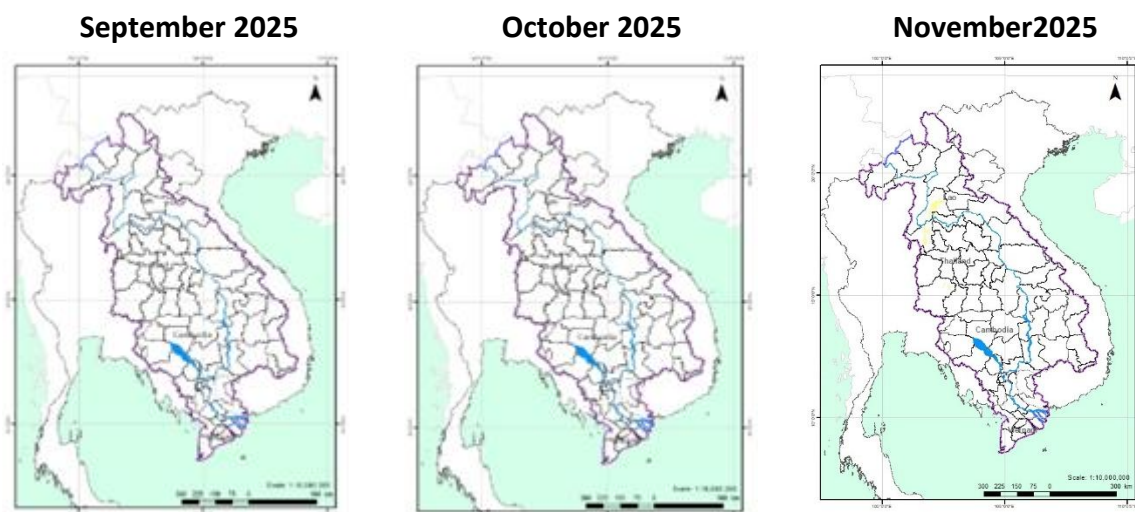
With moderate to heavy rainfall for next week, flash floods might be detected in some areas in the LMB. And local heavy rain in a short period of time is possible with unpredictable short flash floods. Further detailed information on Flash Flood Guidance Information, as well as on its explanation, is available for download [here](#).

### 6.4 Drought forecast

In **Figure 15**, In October and November 2025 the total amount of rainfall in most areas of the LMB will be higher than the LTA by around 5 - 20 mm, except for some areas in the Mekong Delta. However, in December and January, the total amount of rainfall in most areas of the LMB will be lower than the LTA by around 5 - 15 mm, except for some areas in the eastern part of the LMB including the 3S basin.



**Figure 15:** Seasonal forecast of rainfall anomalies for October 2025 to January 2026 based on CFSv2 (NCEP-NOAA)



**Figure 16.** Monthly forecasts of combined drought indicators from September to November 2025

**Figure 14** indicates that the monthly drought forecast for the upcoming three months (September to November) use the Combined Drought Indicator (CDI). The forecast indicates

that no drought conditions are expected in over the LMB in September and October. In November, some areas in the northern part of Lao PDR and northeastern part of Thailand are likely to occur moderate drought using the Combined Drought Indicator (CDI).

## **7 Summary and Possible Implications**

### **7.1. Rainfall and its forecast**

Due to the impact of the typhoon BUALOI, heavy to very heavy rain occurred in the northern and central part of Lao PDR on 29 September.

Next week, from 30 September – 06 October, moderate to heavy rain is expected to occur in the northern and central part of Lao PDR, the northern and northeastern part of Thailand, the central of Cambodia, and Mekong delta.

### **7.2. Water level and its forecast**

At 22 key monitoring stations along the Mekong mainstream from 23 – 29 September 2025, water levels at all stations along the Mekong mainstream have been in normal conditions, which have not reached alarm or flood levels, and the flow threshold (PMFM 6C) are under normal conditions. It is also the same condition for Tan Chau and Chau Doc monitoring stations, which are significantly influenced by sea tidal fluctuation.

In the period of 30 September – 04 October 2025, Water levels at all stations along the Mekong mainstream are expected to rise. Water levels at Khong Chiam, Pakse, Stung Treng and Kratie stations are expected to reach alarm level within the next 5 days. At Tan Chau and Chau Doc stations, the water levels are predicted to be also fluctuated, resulting from the influence of sea tidal patterns.

### **7.3. Flash flood and its trends**

With the predicted of rainfall for the coming week as mentioned earlier in part 2, the flash flood guidance from low to high level will likely be detected in some areas of the LMB.

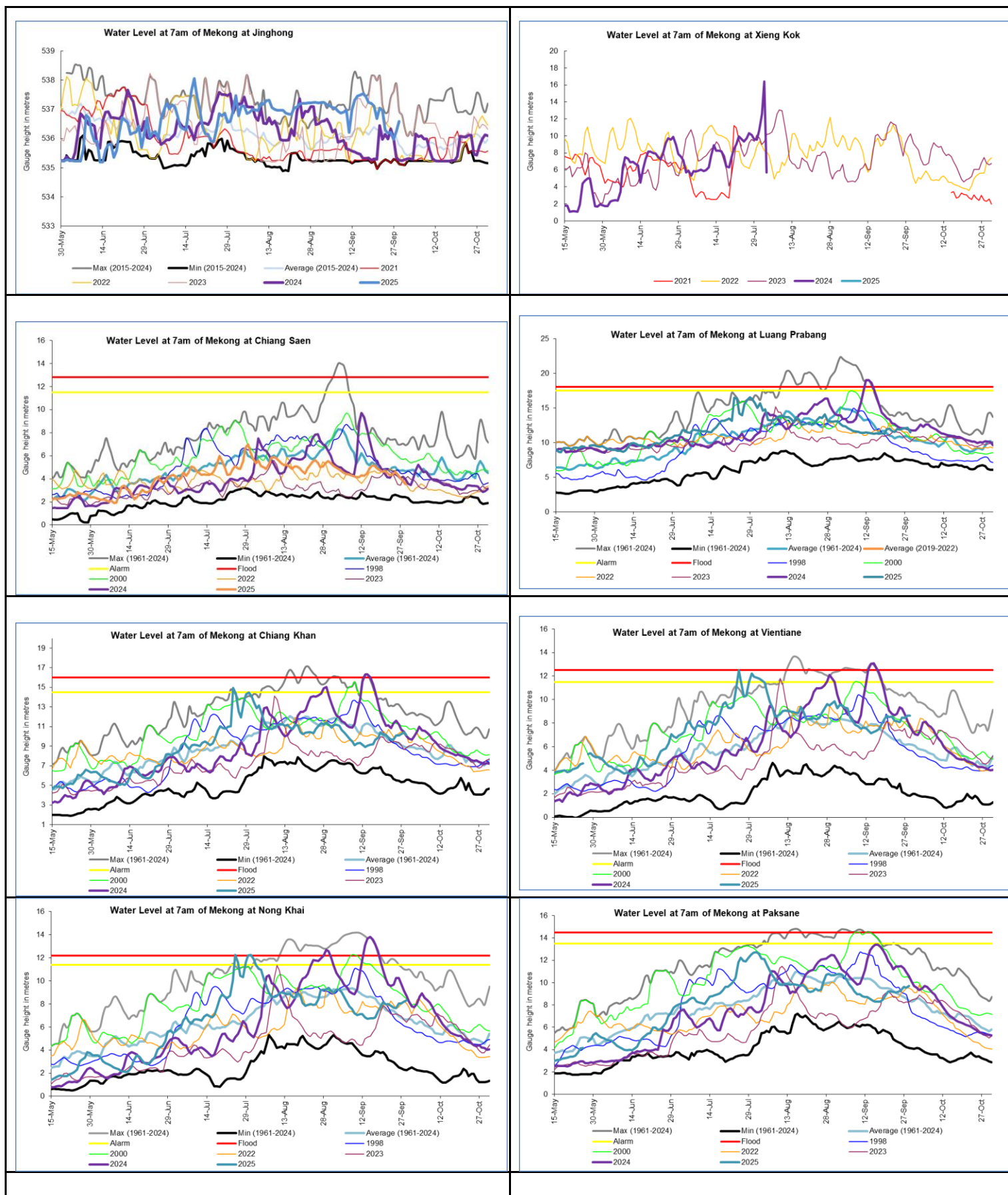
### **7.4. Drought condition and its forecast**

During 23 - 29 September, the LMB were facing normal to wet conditions.

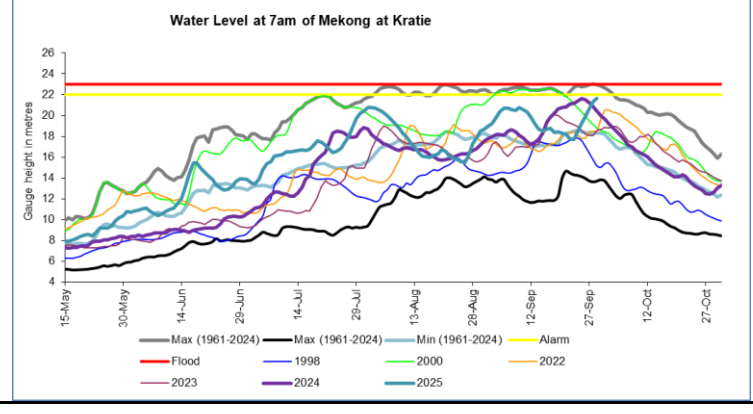
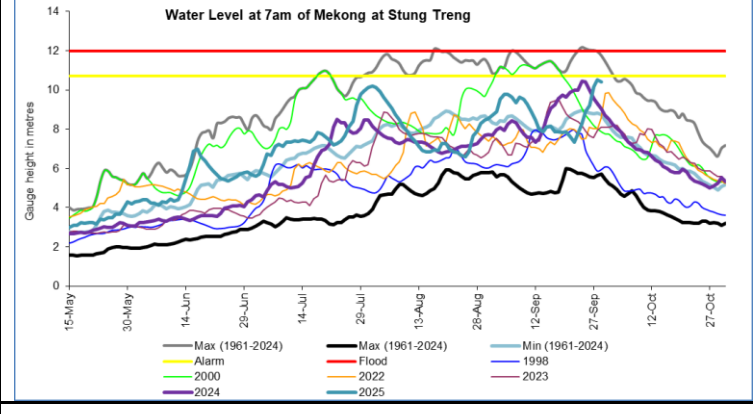
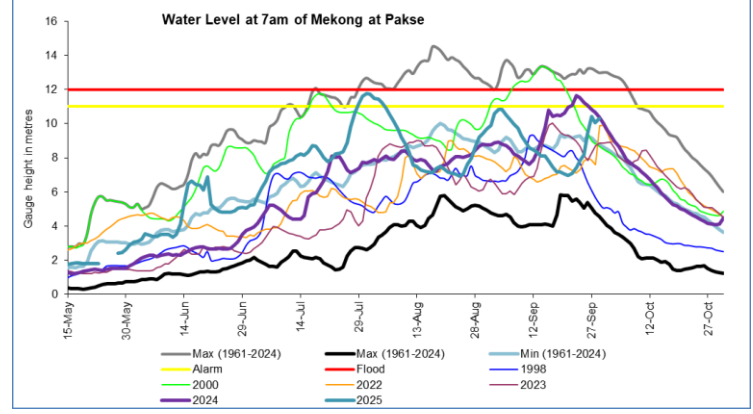
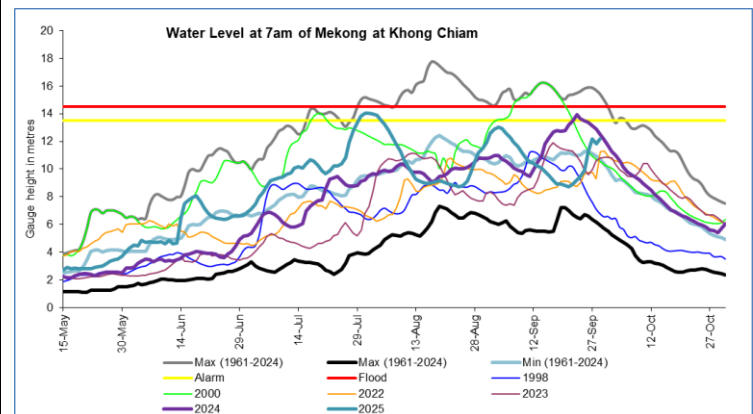
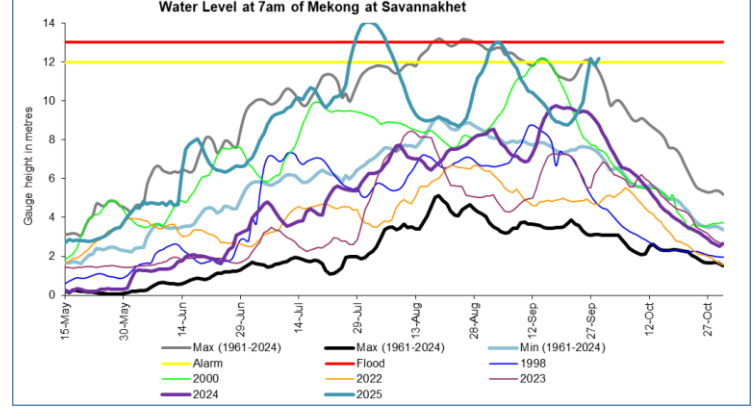
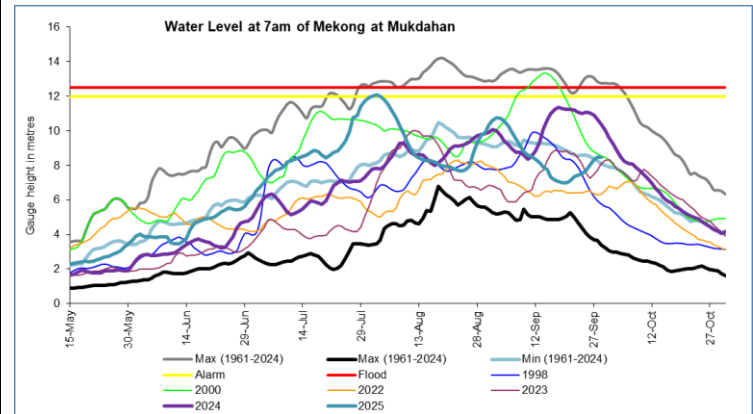
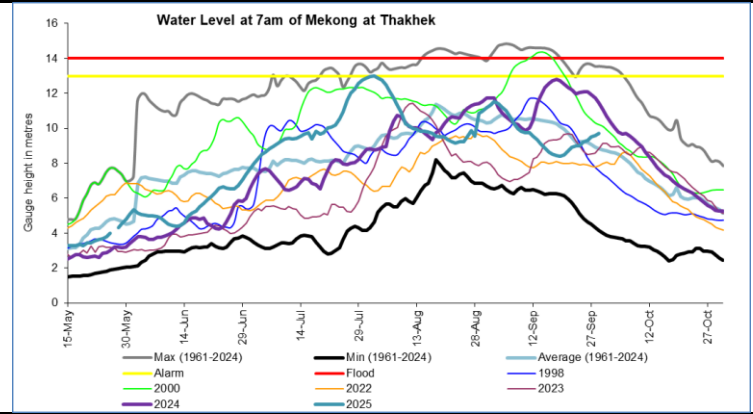
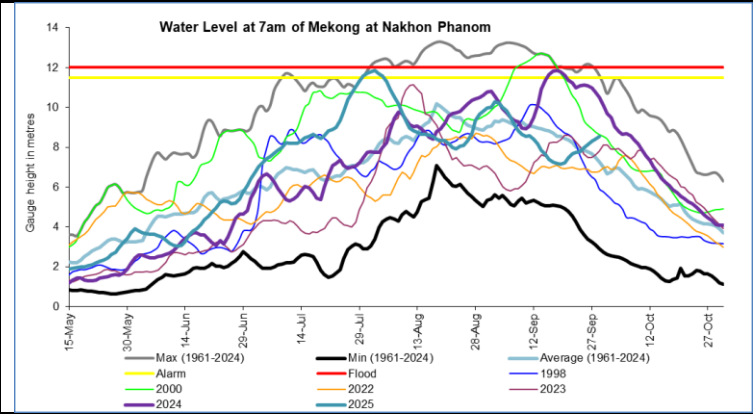
In September and November 2025, the total amount of rainfall in most areas of the LMB will be higher than the LTA by around 5 - 25 mm, except for some areas in the Mekong Delta. However, in October, the total amount of rainfall in most areas of the LMB will be lower than the LTA by around 5 - 15 mm, except for some areas in the southern Lao PDR, northern Cambodia, and the 3S Basin

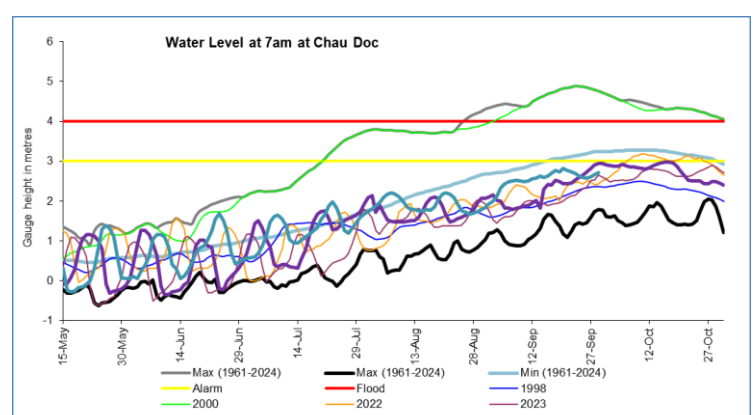
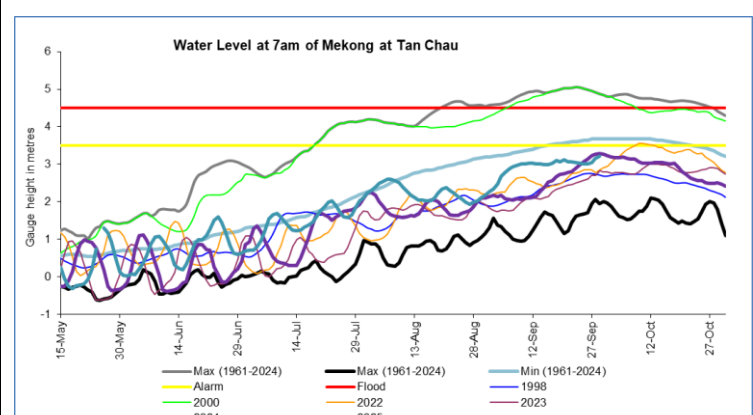
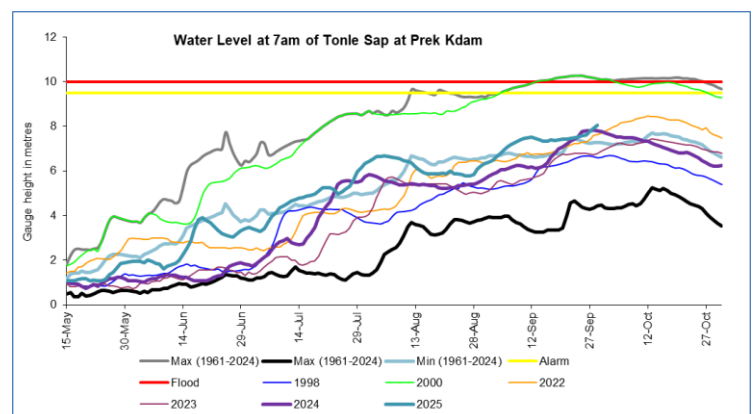
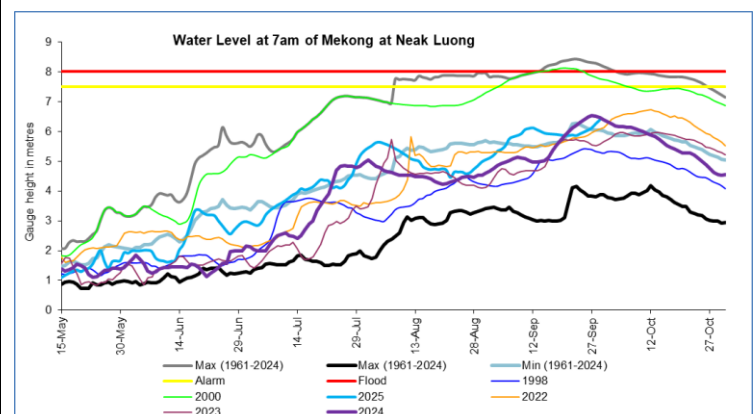
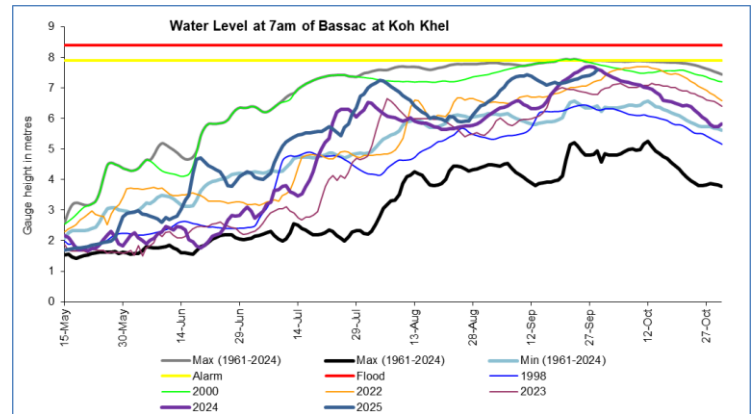
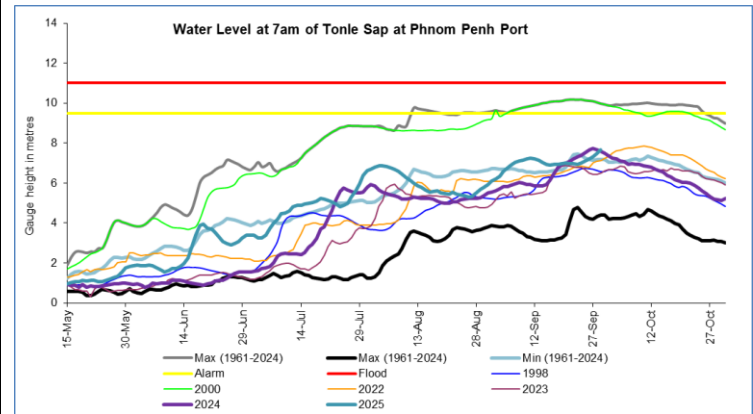
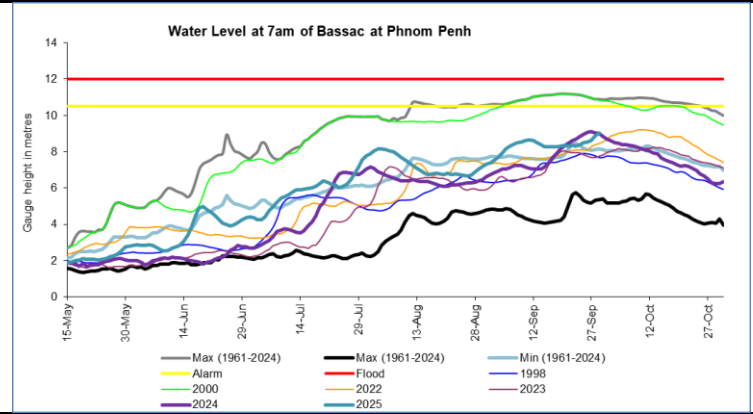
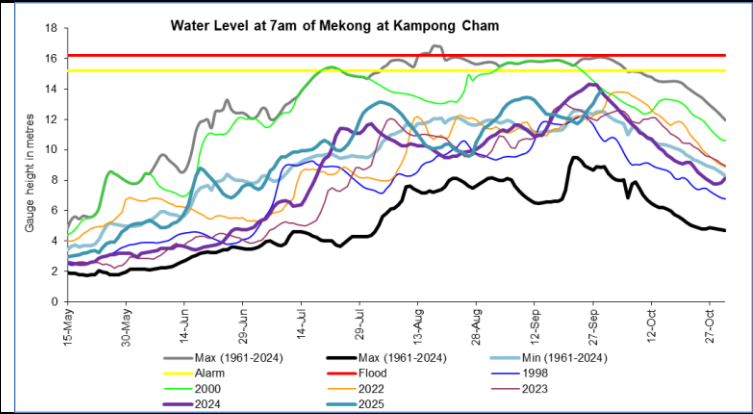
The forecast indicates that no drought conditions are expected in over the LMB in September and October. In November, some areas in the northern part of Lao PDR and northeastern part of Thailand are likely to occur moderate drought using the Combined Drought Indicator (CDI).

## Annex A: Weekly water level monitoring at 22 key stations









## Annex B: Tables for weekly updated water levels and rainfall at the Key Stations

Table A1: Weekly observed water levels

2025	Jinghong	Chiang Saen	Luang Prabang	Chiang Khan	Vientiane	Nongkhai	Paksane	Nakhon Phanom	Thakhek	Mukdahan	Savannakhet	Khong Chiam	Pakse	Stung Treng	Kratie	Kompong Cham	Phnom Penh (Bassac)	Phnom Penh Port	Koh Khel	Neak Luong	Prek Kdam	Tan Chau	Chau Doc
23/09/2025	536.97	4.3	11.54	9.68	8.22	7.83	9.16	7.73	8.98	7.44	5.93	9.2	7.4	7.75	17.71	11.74	8.3	6.95	7.28	5.86	7.47	3.04	2.69
24/09/2025	536.29	4.4	11.98	9.65	8.16	7.67	9.11	7.77	9	7.51	6	9.49	7.82	8.28	18.45	11.96	8.4	7.01	7.3	5.92	7.52	3.02	2.63
25/09/2025	536.19	4.58	11.9	10.08	8.09	7.63	9.2	7.98	9.22	7.71	6.18	9.94	8.2	8.9	19.25	12.34	8.49	7.1	7.36	5.98	7.58	3.01	2.59
26/09/2025	536.21	4.35	11.98	10.08	8.48	8.04	9.32	8.12	9.32	7.98	6.42	11.22	9.4	9.2	19.99	12.74	8.55	7.2	7.38	6.04	7.62	3	2.58
27/09/2025	535.97	4.08	12.1	10.23	8.42	8.02	9.64	8.31	9.53	8.32	6.77	12.19	10.44	10.15	20.63	13.06	8.6	7.3	7.4	6.12	7.76	3.05	2.61
28/09/2025	536.24	3.81	12.14	10.41	8.64	8.2	9.52	8.41	9.6	8.49	6.95	11.84	10.06	10.52	21.4	13.5	8.89	7.5	7.47	6.26	7.92	3.15	2.66
29/09/2025	536.58	3.56	11.5	10.15	8.63	8.31	9.72	8.53	9.72	8.49	6.96	12.19	10.32	10.4	21.61	13.88	9.04	7.68	7.58	6.38	8.06	3.21	2.71
Flood level		12.80	18.00	16.00	12.50	12.00	14.50	12.50	14.00	12.50	13.00	14.50	12.00	12.00	23.00	16.20	12.00	11.00	6.04	8.00	10.00	4.50	4.00

Table A2: Weekly observed rainfall

2025	Jinghong	Chiang Saen	Luang Prabang	Chiang Khan	Vientiane	Nongkhai	Paksane	Nakhon Phanom	Thakhek	Mukdahan	Savannakhet	Khong Chiam	Pakse	Stung Treng	Kratie	Kompong Cham	Phnom Penh (Bassac)	Phnom Penh Port	Koh Khel	Neak Luong	Prek Kdam	Tan Chau	Chau Doc
23/09/2025	0	0.7	33	5.9	40.9	9	0	16	34.7	2.1	0	4	25	9.5	10	52	1.6	0	67.5	32.7	17.2	7.4	20.6
24/09/2025	6.5	20.5	17.8	3.9	0.3	38	33.5	27.2	22.3	0.6	0.6	61.5	20	31	5.3	16	5.7	0	36.9	2.6	5.4	1.2	0.3
25/09/2025	0	7.5	0	15.2	17.2	4.2	0	7	11.3	6.5	9.8	11.5	18	17.5	0	0	0.3	0	1.8	0	0	0	0
26/09/2025	0	8.8	29.8	0	0	0.2	118.8	5.1	0.5	21.1	8.4	122.5	126.4	0	0	0	0	0	0	0	0	0	0
27/09/2025	1.5	1.5	0.8	86.5	23	55.1	0	6	7	28	29.6	37	84.4	30	41.5	1.5	0	0	0	0	0	0	0
28/09/2025	16.5	1.5	0	0	0	0	2.6	7	7.1	3.4	3.4	9.8	13.5	0	8.2	22.5	9.7	0	0	6.6	0	27.5	55.3
29/09/2025	0	0	0	0	0	0	11.3	11.3	14.8	36.5	65.2	83.8	82.2	8.5	0	7	0.9	0	0	8.6	13.4	19.7	0
Sum	24.5	80.8	20.6	20.0	81.4	106.5	166.2	79.6	97.7	98.2	117.0	330.1	369.5	96.5	65.0	99.0	18.2	0.0	106.2	50.5	36.0	55.8	76.2

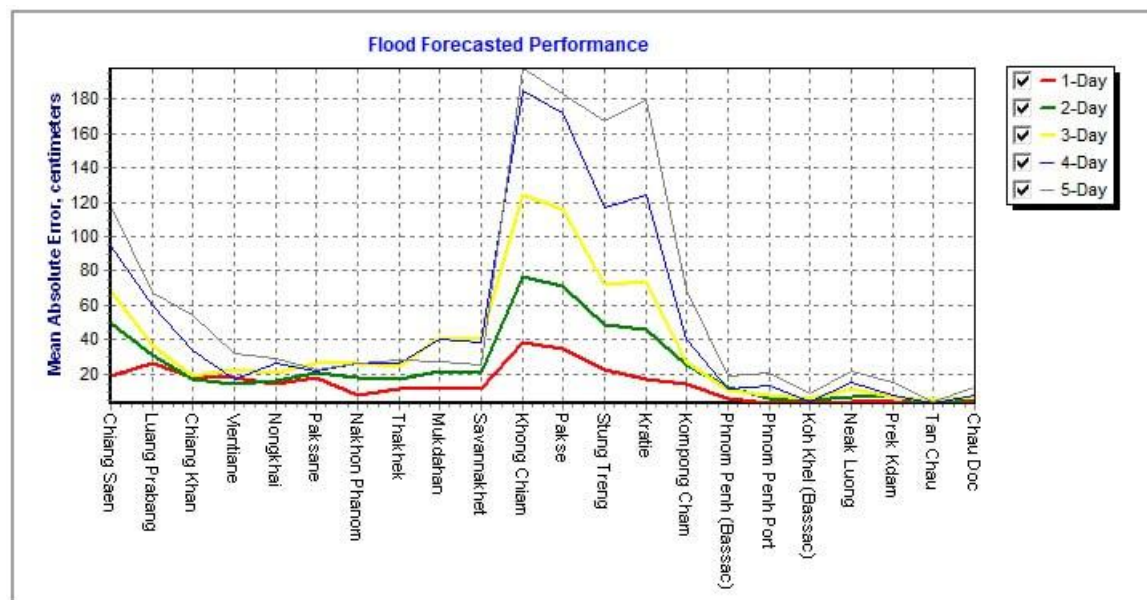


## Annex C: Performance of the weekly flood forecasting

“Accuracy” here refers to the state where data recorded in the MRC’s Mekong River Flood Forecasting System are cleaned and verified.

The adjustment of flood forecasting outcomes from the flood forecasting system requires flood forecasters to have extensive knowledge in hydrology and statistical modelling for estimating the relationships between stations upstream and downstream in the Mekong River Basin. Flood forecasting performance presented in the graph below shows the average flood forecasting accuracy at each key station along the Mekong mainstream from 23 to 29 September 2025.

The forecasting values from 23 to 29 September 2025 show that the overall accuracy is fair for a four-day to five-day forecast in lead time (less than 250 cm) for all of the stations from the upper to the lower parts of the Mekong River with combine information of rainfall and reservoirs' operation in this area during the report period. Moreover, the sudden release from hydropower also contribute to the low accuracies.



**Note:** The higher percentage of flood forecasting accuracy is due to several key factors as follows:

- Chiang Saen station is influenced by hydropower upstream operation from China.
- Luang Prabang to Chiang Khan and Paksane to Stung Treng to Kratie have been influenced by hydropower operations upstream, tributaries inflows.
- The influence of heavy rainfall caused by storms and hydropower operations from upstream, tributaries inflows and the lower part of the Mekong floodplain, including the 3S (Stung Treng and Kratie).
- Fluctuations of the water levels at Tan Chau and Chau Doc stations were due to daily tidal effects of the sea in the Mekong Delta.
- Satellite rainfall data were not representative of the actual rainfall at ground stations in some areas of the Mekong region.



## Mekong River Commission Secretariat

P. O. Box 6101, 184 Fa Ngoum Road, Unit 18 Ban Sithane Neua, Sikhottabong District, Vientiane 01000, Lao PDR  
Tel: +856 21 263 263. Fax: +856 21 263 264 [www.mrcmekong.org](http://www.mrcmekong.org)  
© Mekong River Commission 2024